

LEGEND - EXISTING

- SUBJECT PROPERTY (NOT SURVEYED)
- ADJOINING PROPERTY
- RIGHT-OF-WAY
- MAJOR CONTOUR
- MINOR CONTOUR
- OE OVERHEAD ELECTRIC LINE
- G GAS LINE
- W WATER LINE
- SAN SANITARY SEWER
- ST STORM SEWER
- IRON PIN-PIPE
- CONTROL POINT
- CATCH BASIN
- GAS VALVE
- GUY ANCHOR
- SANITARY MANHOLE
- SINGLE POST SIGN
- UTILITY POLE
- WATER VALVE
- GAS MARKER
- LIGHT POLE
- GAS METER
- TREE / VEGETATION

LEGEND - DEMOLITION

- LOD WORK LIMITS
- ▨ EXISTING LAWN TO BE REMOVED
- ▩ EXISTING KNOTWEED ERADICATION

SHEET NOTES - EXISTING

1. SURVEY DATUMS
A. VERTICAL CONTROL: NORTH AMERICAN VERTICAL DATUM OF 1988 (NAVD 88)
B. HORIZONTAL COORDINATES: PENNSYLVANIA COORDINATE SYSTEM OF 183 NORTH ZONE. GRID NORTH ESTABLISHED PER GPS OBSERVATIONS CONDUCTED ON THE NAD83 (2011) DATUM UTILIZING THE KEYNETGPS VRS NETWORK.
2. EXISTING CONDITIONS PLAN BASED UPON SURVEY PREPARED BY SHEFFLER & COMPANY, INC. DATED 11/25/2023.
3. ACT 287 - 1974, OR AS AMENDED IN COMPLIANCE WITH ACT 287 PRIOR TO EXCAVATION, THE CONTRACTOR MUST CALL THIS NUMBER AND NOTIFY ALL UTILITY COMPANIES OF HIS INTENTION TO EXCAVATE NO LESS THAN THREE (3) WORKING DAYS PRIOR TO EXCAVATION. LOCAL PHONE NUMBER IS 412-323-7100. STATEWIDE PHONE NUMBER IS 1-800-242-1776.
4. THE LOCATIONS OF EXISTING UNDERGROUND UTILITIES ARE SHOWN IN AN APPROXIMATE WAY ONLY AND HAVE NOT BEEN INDEPENDENTLY VERIFIED BY THE OWNER OR ITS REPRESENTATIVE. THE CONTRACTOR SHALL DETERMINE THE EXACT LOCATION OF ALL EXISTING UTILITIES BEFORE COMMENCING WORK AND AGREES TO BE FULLY RESPONSIBLE FOR ANY AND ALL DAMAGES WHICH MIGHT BE OCCASIONED BY THE CONTRACTOR'S FAILURE TO EXACTLY LOCATE AND PRESERVE ANY AND ALL UNDERGROUND UTILITIES.
5. THE CONTRACTOR IS RESPONSIBLE FOR THE PROTECTION OF ALL EXISTING MONUMENTS AND OTHER SURVEY MARKERS. MONUMENTS AND SURVEY MARKERS DESTROYED DURING CONSTRUCTION SHALL BE REPLACED AT THE CONTRACTOR'S EXPENSE.

SHEET NOTES - DEMOLITION

1. THE EXACT LOCATION AND DEPTH OF ALL UTILITIES MUST BE VERIFIED BY THE CONTRACTOR PRIOR TO CONSTRUCTION.
2. SAWCUT ALL ENDS OF BITUMINOUS AND CONCRETE PAVING PRIOR TO REMOVAL. REMOVE CONCRETE PAVING AT NEAREST PAVING JOINT.
3. THE CONTRACTOR SHALL LIMIT REMOVALS TO ONLY IN AREAS DELINEATED ON THE DRAWINGS.
4. THE CONTRACTOR SHALL REPAIR ALL DAMAGED PAVEMENT IN ACCORDANCE WITH THE DETAILS ON THE DRAWINGS.
5. THE CONTRACTOR SHALL PERFORM ALL CONSTRUCTION IN A MANNER TO PROTECT EXISTING UTILITIES. NO UTILITIES SHALL BE REMOVED FROM SERVICE WITHOUT APPROVAL OF THE UTILITY. ALL DAMAGED UTILITIES SHALL BE REPAIRED BY THE AFFECTED UTILITY WITH THE CONTRACTOR BEARING ALL COSTS ASSOCIATED WITH THE REPAIR.
6. LIMIT OF DISTURBANCE SHOWN 2'-0" OUTSIDE OF TRUE LIMIT FOR CLARITY PURPOSES ONLY.



WALLACEPANCHER GROUP
144 Emeryville Drive, Suite 200
Cranberry Township, PA 16066
Phone: (724) 881-0155
www.wallacepancher.com
Engineering and Environmental Professionals

OIL REGION ALLIANCE OF BUSINESS, INDUSTRY & TOURISM
217 ELM STREET
OIL CITY, PA 16201

PRELIMINARY PLAN NOT FOR CONSTRUCTION

REVISION INFORMATION:

NO.	DATE	DESCRIPTION

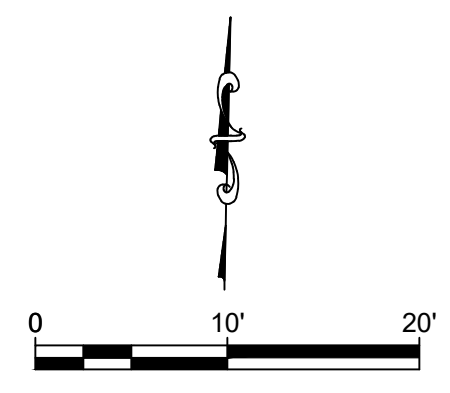
DRAWN: _____

CHECKED: _____

DATE: _____

JAPANESE KNOTWEED-EXISTING CONDITIONS & DEMOLITION PLAN

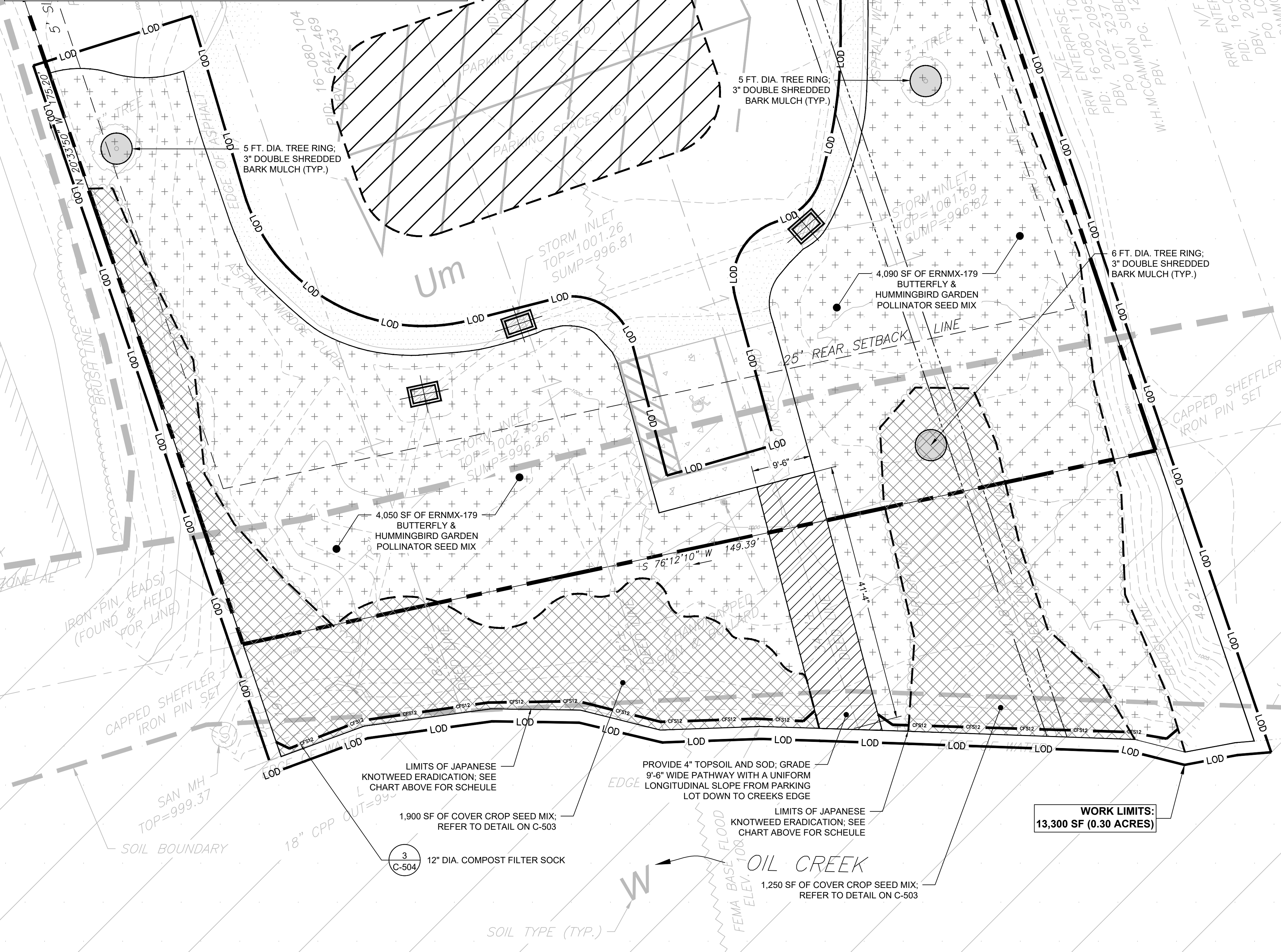
DATE: 12/21/23
SHEET NO.: C-101A
PROJ. NO.: 22121



PLOTTED: 12/21/2023 3:04 PM BY: 1061 hmk
 PLOT STYLE: WPLS2018.dwg
 C:\22121\OilRegionAlliance\dwg\plans\16-080-110\16-080-110-001-001.dwg

Treatment	Timing	Herbicide	Product Rate	Comments
Preherbicide cutting	June	N/A	N/A	Cutting in June results in shortened regrowth (2 to 5 feet) and elimination of persistent stems from the previous season. This is a particular advantage in riparian settings, where full-size knotweed will hang over the water, making it impossible to treat without contacting the water with herbicide solution.
Foliar	At least eight weeks after cutting as a follow-up treatment or after late spring frosts for a treatment plan without cutting	Aquaneat or Glyphomate 41 (glyphosate)	3 quarts/acre or 4.3 quarts/acre	Use any of these glyphosate formulations to treat knotweed foliage, waiting eight weeks after cutting or a late frost to treat. The product rates differ because the glyphosate concentration differs between products. Applications of Aquaneat will require an additional surfactant (e.g., CVC 90). No additional surfactant is needed with Glyphomate 41. If you work at the early end of the operational window, you can make a touch-up application later in the season before a killing frost. Use this treatment for both initial control and follow-up maintenance applications. For high-volume (spray-to-wet) applications, mix on a 100 gallon-per-acre basis (e.g., Aquaneat would be 96 ounces per 100 gallons, or 0.75 percent by volume). For all treatments, be sure to calibrate your sprayer.

	Jan.	Feb.	Mar.	April	May	June	July	Aug.	Sept.	Oct.	Nov.	Dec.
Growth Initiation												
Flowering and Seed Ripening												
Preherbicide Cutting												
Postcutting Herbicide												
Biannual Foliar Herbicide on Upright Plants												



LEGEND - GRADING

- SUBJECT PROPERTY (NOT SURVEYED)
- ADJOINING PROPERTY
- RIGHT-OF-WAY
- WORK LIMITS
- EXISTING MAJOR CONTOUR
- EXISTING MINOR CONTOUR
- PROPOSED MAJOR CONTOUR
- PROPOSED MINOR CONTOUR
- EXISTING SPOT ELEVATION
- PROPOSED SPOT ELEVATION
- HIGH POINT ELEVATION
- LOW POINT ELEVATION
- PROPOSED SLOPE

LEGEND - LANDSCAPE

- ERNMX-179 BUTTERFLY & HUMMINGBIRD GARDEN POLLINATOR SEED MIX
- COVER CROP SEED MIX
- LAWN; SOD

LEGEND - E&S

- 12" DIA. COMPOST FILTER SOCK
- INLET FILTER BAG

- ### SHEET NOTES - E&S
- ACT 287 - 1974, OR AS AMENDED IN COMPLIANCE WITH ACT 287 PRIOR TO EXCAVATION, THE CONTRACTOR MUST CALL THIS NUMBER AND NOTIFY ALL UTILITY COMPANIES OF HIS INTENTION TO EXCAVATE NO LESS THAN THREE (3) WORKING DAYS PRIOR TO EXCAVATION. LOCAL PHONE NUMBER IS 412-323-7100. STATEWIDE PHONE NUMBER IS 1-800-242-1776.
 - ALL WORK SHALL BE PERFORMED IN ACCORDANCE WITH THE PADEP REGULATIONS. ALL STORM WATER BEST MANAGEMENT PRACTICES SHALL BE SUBMITTED TO THE ENGINEER FOR APPROVAL PRIOR TO IMPLEMENTATION.
 - SEE EROSION AND SEDIMENT POLLUTION CONTROL DETAILS FOR GENERAL CONSTRUCTION NOTES AND CONSTRUCTION SEQUENCING.
 - THE CONTRACTOR SHALL BE RESPONSIBLE FOR PERFORMING ALL MEASURES REQUIRED TO CONTROL EROSION IN ACCORDANCE WITH THE EROSION AND SEDIMENT POLLUTION CONTROL PLANS AND PADEP REGULATIONS.
 - INSTALL EROSION CONTROL BLANKET OR EQUIVALENT ON ALL SLOPES 3:1 OR STEEPER, UNLESS OTHERWISE NOTED.
 - THE CONTRACTOR SHALL PERFORM ALL CONSTRUCTION IN A MANNER TO PROTECT EXISTING UTILITIES. NO UTILITIES SHALL BE REMOVED FROM SERVICE WITHOUT APPROVAL OF THE UTILITY. ALL DAMAGED UTILITIES SHALL BE REPAIRED BY THE AFFECTED UTILITY WITH THE CONTRACTOR BEARING ALL COSTS ASSOCIATED WITH THE REPAIR.
 - CONTRACTOR TO FOLLOW TEMPORARY AND PERMANENT STABILIZATION TABLES ON EROSION AND SEDIMENT POLLUTION CONTROL DETAIL SHEETS.
 - IN THE CASE BULK EARTHWORK IS BEING PERFORMED DURING FREEZING CONDITIONS (DURING WINTER), UNDER NO CONDITIONS WILL FROZEN OR UNSUITABLE FILL MATERIAL THAT WILL POTENTIALLY EFFECT THE INTEGRITY OF THE SLOPES BE ACCEPTABLE TO USE.
 - STORMWATER DISCHARGE DURING CONSTRUCTION IS TO BE TREATED BY PERIMETER COMPOST FILTER SOCK AND INLET PROTECTION. A TEMPORARY CONSTRUCTION ENTRANCE, EROSION CONTROL BLANKET, COMPOST FILTER SOCK AND TEMPORARY SEED WILL BE UTILIZED TO MINIMIZE THE AMOUNT OF SEDIMENT LADEN WATER FROM LEAVING THE SITE.
 - LIMIT OF DISTURBANCE SHOWN 2'-0" OUTSIDE OF TRUE LIMIT FOR CLARITY PURPOSES ONLY.

- ### SHEET NOTES - GRADING
- THE EXACT LOCATION AND DEPTH OF ALL UTILITIES MUST BE VERIFIED BY THE CONTRACTOR PRIOR TO CONSTRUCTION. CONTRACTOR TO PROTECT ALL EXISTING UTILITIES AND MAINTAIN UNINTERRUPTED SERVICE.
 - MAXIMUM CROSS-SLOPE ON SIDEWALK IS 2.0%.
 - MAXIMUM LONGITUDINAL SLOPE ON SIDEWALK IS 5.0%.
 - CONTRACTOR SHALL STRIP TOPSOIL FROM ALL AREAS REQUIRING FILL.
 - TOPSOIL SHALL BE STORED IN AN AREA APPROVED BY THE ARCHITECT/ENGINEER.
 - EXCESS TOPSOIL, NOT NEEDED FOR AREAS TO REMAIN AS LAWN, SHALL BECOME THE PROPERTY OF THE CONTRACTOR AND SHALL PROMPTLY BE REMOVED FROM THE JOBSITE.
 - EXCESS EXCAVATED MATERIALS NON SUITABLE OR NEEDED FOR BACKFILL SHALL BECOME THE PROPERTY OF THE CONTRACTOR AND SHALL PROMPTLY BE REMOVED FROM THE JOBSITE.
 - AS DETERMINED BY THE SITE SOILS ENGINEER, EXCAVATED MATERIALS FROM THE SITE MAY BE USED AS EMBANKMENT. MATERIALS SHALL BE PLACED AND COMPACTED AS DIRECTED BY THE SOILS ENGINEER. PERFORM EXCAVATION OR EMBANKMENT IN ACCORDANCE WITH PENNDOT PUBLICATION 408 SECTION 200. AT A MINIMUM, ALL EXCAVATED AND FILLED AREAS SHALL BE COMPACTED IN 8" MAXIMUM LIFTS TO 98% STANDARD PROCTOR MAXIMUM DRY DENSITY PER ASTM D-698 WITH A MOISTURE CONTENT NOT EXCEEDING 3% OF OPTIMUM.

- ### SHEET NOTES - LANDSCAPE
- ALL TREE LOCATIONS SHALL BE STAKED IN THE FIELD AND LOCATIONS APPROVED BY LANDSCAPE ARCHITECT PRIOR TO PLANTING.
 - NOTIFY ALL UTILITY COMPANIES AND LOCATE ALL UTILITIES PRIOR TO EXCAVATING PLANT PITS. PLANT LOCATIONS MAY BE ADJUSTED IN THE FIELD TO AVOID INTERFERENCE WITH UNDERGROUND UTILITIES.
 - ALL PLANT MATERIAL SHALL BE OF NURSERY STOCK QUALITY AS DEFINED BY THE AMERICAN NURSERY AND LANDSCAPE ASSOCIATION. ALL PLANT MATERIAL SHALL BE GUARANTEED TO LIVE AT LEAST 12 MONTHS FOLLOWING INSTALLATION. SEE SPECIFICATION WARRANTY.
 - ALL NON-BIODEGRADABLE ROOT WRAPPING TO BE REMOVED COMPLETELY BEFORE PLANTING.
 - PROVIDE 3" DOUBLE GROUND BARK MULCH OR RIVER ROCK AT ALL PLANTING AREAS.
 - ALL PLANT MATERIAL SHALL BE APPROVED UPON ARRIVAL TO THE SITE, UNLESS OTHERWISE NOTIFIED.
 - SEED ALL AREAS DISTURBED BY CONSTRUCTION NOT OTHERWISE CONTAINING PLANTING BEDS, SLOPE SEEDING, SIDEWALKS, BUILDINGS, ETC. WITH 4" MIN. DEPTH TOPSOIL AND LAWN SEEDING. THIS INCLUDES ANY DISTURBANCE ASSOCIATED WITH ANY WORK ON SITE.
 - SPACE PLANTS EQUALLY WITHIN ALLOCATED SPACE SHOWN.
 - ALL DEAD AND DYING LANDSCAPING WILL BE REPLACED NO LATER THAN THE SUBSEQUENT PLANTING SEASON.

WALLACEPANCHER GROUP

144 Emeryville Drive, Suite 200
Cranberry Township, PA 16066
www.wallacepancher.com
Phone: (724) 881-0155
Engineering and Environmental Professionals

WALLACEPANCHER GROUP

144 Emeryville Drive, Suite 200
Cranberry Township, PA 16066
www.wallacepancher.com
Phone: (724) 881-0155
Engineering and Environmental Professionals

WALLACEPANCHER GROUP

144 Emeryville Drive, Suite 200
Cranberry Township, PA 16066
www.wallacepancher.com
Phone: (724) 881-0155
Engineering and Environmental Professionals

WALLACEPANCHER GROUP

144 Emeryville Drive, Suite 200
Cranberry Township, PA 16066
www.wallacepancher.com
Phone: (724) 881-0155
Engineering and Environmental Professionals

WALLACEPANCHER GROUP

144 Emeryville Drive, Suite 200
Cranberry Township, PA 16066
www.wallacepancher.com
Phone: (724) 881-0155
Engineering and Environmental Professionals

WALLACEPANCHER GROUP

144 Emeryville Drive, Suite 200
Cranberry Township, PA 16066
www.wallacepancher.com
Phone: (724) 881-0155
Engineering and Environmental Professionals

WALLACEPANCHER GROUP

144 Emeryville Drive, Suite 200
Cranberry Township, PA 16066
www.wallacepancher.com
Phone: (724) 881-0155
Engineering and Environmental Professionals

WALLACEPANCHER GROUP

144 Emeryville Drive, Suite 200
Cranberry Township, PA 16066
www.wallacepancher.com
Phone: (724) 881-0155
Engineering and Environmental Professionals

WALLACEPANCHER GROUP

144 Emeryville Drive, Suite 200
Cranberry Township, PA 16066
www.wallacepancher.com
Phone: (724) 881-0155
Engineering and Environmental Professionals

WALLACEPANCHER GROUP

144 Emeryville Drive, Suite 200
Cranberry Township, PA 16066
www.wallacepancher.com
Phone: (724) 881-0155
Engineering and Environmental Professionals

WALLACEPANCHER GROUP

144 Emeryville Drive, Suite 200
Cranberry Township, PA 16066
www.wallacepancher.com
Phone: (724) 881-0155
Engineering and Environmental Professionals

WALLACEPANCHER GROUP

144 Emeryville Drive, Suite 200
Cranberry Township, PA 16066
www.wallacepancher.com
Phone: (724) 881-0155
Engineering and Environmental Professionals

WALLACEPANCHER GROUP

144 Emeryville Drive, Suite 200
Cranberry Township, PA 16066
www.wallacepancher.com
Phone: (724) 881-0155
Engineering and Environmental Professionals

WALLACEPANCHER GROUP

144 Emeryville Drive, Suite 200
Cranberry Township, PA 16066
www.wallacepancher.com
Phone: (724) 881-0155
Engineering and Environmental Professionals

WALLACEPANCHER GROUP

144 Emeryville Drive, Suite 200
Cranberry Township, PA 16066
www.wallacepancher.com
Phone: (724) 881-0155
Engineering and Environmental Professionals

WALLACEPANCHER GROUP

144 Emeryville Drive, Suite 200
Cranberry Township, PA 16066
www.wallacepancher.com
Phone: (724) 881-0155
Engineering and Environmental Professionals

WALLACEPANCHER GROUP

144 Emeryville Drive, Suite 200
Cranberry Township, PA 16066
www.wallacepancher.com
Phone: (724) 881-0155
Engineering and Environmental Professionals

WALLACEPANCHER GROUP

144 Emeryville Drive, Suite 200
Cranberry Township, PA 16066
www.wallacepancher.com
Phone: (724) 881-0155
Engineering and Environmental Professionals

WALLACEPANCHER GROUP

144 Emeryville Drive, Suite 200
Cranberry Township, PA 16066
www.wallacepancher.com
Phone: (724) 881-0155
Engineering and Environmental Professionals

WALLACEPANCHER GROUP

144 Emeryville Drive, Suite 200
Cranberry Township, PA 16066
www.wallacepancher.com
Phone: (724) 881-0155
Engineering and Environmental Professionals

WALLACEPANCHER GROUP

144 Emeryville Drive, Suite 200
Cranberry Township, PA 16066
www.wallacepancher.com
Phone: (724) 881-0155
Engineering and Environmental Professionals

WALLACEPANCHER GROUP

144 Emeryville Drive, Suite 200
Cranberry Township, PA 16066
www.wallacepancher.com
Phone: (724) 881-0155
Engineering and Environmental Professionals

WALLACEPANCHER GROUP

144 Emeryville Drive, Suite 200
Cranberry Township, PA 16066
www.wallacepancher.com
Phone: (724) 881-0155
Engineering and Environmental Professionals

WALLACEPANCHER GROUP

144 Emeryville Drive, Suite 200
Cranberry Township, PA 16066
www.wallacepancher.com
Phone: (724) 881-0155
Engineering and Environmental Professionals

WALLACEPANCHER GROUP

144 Emeryville Drive, Suite 200
Cranberry Township, PA 16066
www.wallacepancher.com
Phone: (724) 881-0155
Engineering and Environmental Professionals

WALLACEPANCHER GROUP

144 Emeryville Drive, Suite 200
Cranberry Township, PA 16066
www.wallacepancher.com
Phone: (724) 881-0155
Engineering and Environmental Professionals

WALLACEPANCHER GROUP

144 Emeryville Drive, Suite 200
Cranberry Township, PA 16066
www.wallacepancher.com
Phone: (724) 881-0155
Engineering and Environmental Professionals

WALLACEPANCHER GROUP

144 Emeryville Drive, Suite 200
Cranberry Township, PA 16066
www.wallacepancher.com
Phone: (724) 881-0155
Engineering and Environmental Professionals

WALLACEPANCHER GROUP

144 Emeryville Drive, Suite 200
Cranberry Township, PA 16066
www.wallacepancher.com
Phone: (724) 881-0155
Engineering and Environmental Professionals

WALLACEPANCHER GROUP

144 Emeryville Drive, Suite 200
Cranberry Township, PA 16066
www.wallacepancher.com
Phone: (724) 881-0155
Engineering and Environmental Professionals

WALLACEPANCHER GROUP

144 Emeryville Drive, Suite 200
Cranberry Township, PA 16066
www.wallacepancher.com
Phone: (724) 881-0155
Engineering and Environmental Professionals

WALLACEPANCHER GROUP

144 Emeryville Drive, Suite 200
Cranberry Township, PA 16066
www.wallacepancher.com
Phone: (724) 881-0155
Engineering and Environmental Professionals

WALLACEPANCHER GROUP

144 Emeryville Drive, Suite 200
Cranberry Township, PA 16066
www.wallacepancher.com
Phone: (724) 881-0155
Engineering and Environmental Professionals

WALLACEPANCHER GROUP

144 Emeryville Drive, Suite 200
Cranberry Township, PA 16066
www.wallacepancher.com
Phone: (724) 881-0155
Engineering and Environmental Professionals

WALLACEPANCHER GROUP

144 Emeryville Drive, Suite 200
Cranberry Township, PA 16066
www.wallacepancher.com
Phone: (724) 881-0155
Engineering and Environmental Professionals

WALLACEPANCHER GROUP

144 Emeryville Drive, Suite 200
Cranberry Township, PA 16066
www.wallacepancher.com
Phone: (724) 881-0155
Engineering and Environmental Professionals

WALLACEPANCHER GROUP

144 Emeryville Drive, Suite 200
Cranberry Township, PA 16066
www.wallacepancher.com
Phone: (724) 881-0155
Engineering and Environmental Professionals

WALLACEPANCHER GROUP

144 Emeryville Drive, Suite 200
Cranberry Township, PA 16066
www.wallacepancher.com
Phone: (724) 881-0155
Engineering and Environmental Professionals

WALLACEPANCHER GROUP

144 Emeryville Drive, Suite 200
Cranberry Township, PA 16066
www.wallacepancher.com
Phone: (724) 881-0155
Engineering and Environmental Professionals

WALLACEPANCHER GROUP

144 Emeryville Drive, Suite 200
Cranberry Township, PA 16066
www.wallacepancher.com
Phone: (724) 881-0155
Engineering and Environmental Professionals

WALLACEPANCHER GROUP

144 Emeryville Drive, Suite 200
Cranberry Township, PA 16066
www.wallacepancher.com
Phone: (724) 881-0155
Engineering and Environmental Professionals

WALLACEPANCHER GROUP

144 Emeryville Drive, Suite 200
Cranberry Township, PA 16066
www.wallacepancher.com
Phone: (724) 881-0155
Engineering and Environmental Professionals

WALLACEPANCHER GROUP

144 Emeryville Drive, Suite 200
Cranberry Township, PA 16066
www.wallacepancher.com
Phone: (724) 881-0155
Engineering and Environmental Professionals

WALLACEPANCHER GROUP

144 Emeryville Drive, Suite 200
Cranberry Township, PA 16066
www.wallacepancher.com
Phone: (724) 881-0155
Engineering and Environmental Professionals

WALLACEPANCHER GROUP

144 Emeryville Drive, Suite 200
Cranberry Township, PA 16066
www.wallacepancher.com
Phone: (724) 881-0155
Engineering and Environmental Professionals

WALLACEPANCHER GROUP

144 Emeryville Drive, Suite 200
Cranberry Township, PA 16066
www.wallacepancher.com
Phone: (724) 881-0155
Engineering and Environmental Professionals

WALLACEPANCHER GROUP

144 Emeryville Drive, Suite 200
Cranberry Township, PA 16066
www.wallacepancher.com
Phone: (724) 881-0155
Engineering and Environmental Professionals

WALLACEPANCHER GROUP

144 Emeryville Drive, Suite 200
Cranberry Township, PA 16066
www.wallacepancher.com
Phone: (724) 881-0155
Engineering and Environmental Professionals

WALLACEPANCHER GROUP

144 Emeryville Drive, Suite 200
Cranberry Township, PA 16066
www.wallacepancher.com
Phone: (724) 881-0155
Engineering and Environmental Professionals

WALLACEPANCHER GROUP

144 Emeryville Drive, Suite 200
Cranberry Township, PA 16066
www.wallacepancher.com
Phone: (724) 881-0155
Engineering and Environmental Professionals

WALLACEPANCHER GROUP

144 Emeryville Drive, Suite 200
Cranberry Township, PA 16066
www.wallacepancher.com
Phone: (724) 881-0155
Engineering and Environmental Professionals

WALLACEPANCHER GROUP

144 Emeryville Drive, Suite 200
Cranberry Township, PA 16066
www.wallacepancher.com
Phone: (724) 881-0155
Engineering and Environmental Professionals

WALLACEPANCHER GROUP

144 Emeryville Drive, Suite 200
Cranberry Township, PA 16066
www.wallacepancher.com
Phone: (724) 881-0155
Engineering and Environmental Professionals

WALLACEPANCHER GROUP

144 Emeryville Drive, Suite 200
Cranberry Township, PA 16066
www.wallacepancher.com
Phone: (724) 881-0155
Engineering and Environmental Professionals

WALLACEPANCHER GROUP

144 Emeryville Drive, Suite 200
Cranberry Township, PA 16066
www.wallacepancher.com
Phone: (724) 881-0155
Engineering and Environmental Professionals

WALLACEPANCHER GROUP

144 Emeryville Drive, Suite 200
Cranberry Township, PA 16066
www.wallacepancher.com
Phone: (724) 881-0155
Engineering and Environmental Professionals

WALLACEPANCHER GROUP

144 Emeryville Drive, Suite 200
Cranberry Township, PA 16066
www.wallacepancher.com
Phone: (724) 881-0155
Engineering and Environmental Professionals

WALLACEPANCHER GROUP

144 Emeryville Drive, Suite 200
Cranberry Township, PA 16066
www.wallacepancher.com
Phone: (724) 881-0155
Engineering and Environmental Professionals

WALLACEPANCHER GROUP

144 Emeryville Drive, Suite 200
Cranberry Township, PA 16066
www.wallacepancher.com
Phone: (724) 881-0155
Engineering and Environmental Professionals

WALLACEPANCHER GROUP

144 Emeryville Drive, Suite 200
Cranberry Township, PA 16066
www.wallacepancher.com
Phone: (724) 881-0155
Engineering and Environmental Professionals

WALLACEPANCHER GROUP

144 Emeryville Drive, Suite 200
Cranberry Township, PA 16066
www.wallacepancher.com
Phone: (724) 881-0155
Engineering and Environmental Professionals

WALLACEPANCHER GROUP

144 Emeryville Drive, Suite 200
Cranberry Township, PA 16066
www.wallacepancher.com
Phone: (724) 881-0155
Engineering and Environmental Professionals

WALLACEPANCHER GROUP

144 Emeryville Drive, Suite 200
Cranberry Township, PA 16066
www.wallacepancher.com
Phone: (724) 881-0155
Engineering and Environmental Professionals

WALLACEPANCHER GROUP

144 Emeryville Drive, Suite 200
Cranberry Township, PA 16066
www.wallacepancher.com
Phone: (724) 881-0155
Engineering and Environmental Professionals

WALLACEPANCHER GROUP

144 Emeryville Drive, Suite 200
Cranberry Township, PA 16066
www.wallacepancher.com
Phone: (724) 881-0155
Engineering and Environmental Professionals

WALLACEPANCHER GROUP

144 Emeryville Drive, Suite 200
Cranberry Township, PA 16066
www.wallacepancher.com
Phone: (724) 881-0155
Engineering and Environmental Professionals

WALLACEPANCHER GROUP

144 Emeryville Drive, Suite 200
Cranberry Township, PA 16066
www.wallacepancher.com
Phone: (724) 881-0155
Engineering and Environmental Professionals

WALLACEPANCHER GROUP

144 Emeryville Drive, Suite 200
Cranberry Township, PA 16066
www.wallacepancher.com
Phone: (724) 881-0155
Engineering and Environmental Professionals

WALLACEPANCHER GROUP

144 Emeryville Drive, Suite 200
Cranberry Township, PA 16066
www.wallacepancher.com
Phone: (724) 881-0155
Engineering and Environmental Professionals

WALLACEPANCHER GROUP

144 Emeryville Drive, Suite 200
Cranberry Township, PA 16066
www.wallacepancher.com
Phone: (724) 881-0155
Engineering and Environmental Professionals

WALLACEPANCHER GROUP

144 Emeryville Drive, Suite 200
Cranberry Township, PA 16066
www.wallacepancher.com
Phone: (724) 881-0155
Engineering and Environmental Professionals

WALLACEPANCHER GROUP

144 Emeryville Drive, Suite 200
Cranberry Township, PA 16066
www.wallacepancher.com
Phone: (724) 881-0155
Engineering and Environmental Professionals

WALLACEPANCHER GROUP

144 Emeryville Drive, Suite 200
Cranberry Township, PA 16066
www.wallacepancher.com
Phone: (724) 881-0155
Engineering and Environmental Professionals

WALLACEPANCHER GROUP

144 Emeryville Drive, Suite 200
Cranberry Township, PA 16066
www.wallacepancher.com
Phone: (724) 881-0155
Engineering and Environmental Professionals

WALLACEPANCHER GROUP

144 Emeryville Drive, Suite 200
Cranberry Township, PA 16066
www.wallacepancher.com
Phone: (724) 881-0155
Engineering and Environmental Professionals

WALLACEPANCHER GROUP

144 Emeryville Drive, Suite 200
Cranberry Township, PA 16066
www.wallacepancher.com
Phone: (724) 881-0155
Engineering and Environmental Professionals

WALLACEPANCHER GROUP

144 Emeryville Drive, Suite 200
Cranberry Township, PA 16066
www.wallacepancher.com
Phone: (724) 881-0155
Engineering and Environmental Professionals

WALLACEPANCHER GROUP

144 Emeryville Drive, Suite 200
Cranberry Township, PA 16066
www.wallacepancher.com
Phone: (724) 881-0155
Engineering and Environmental Professionals

WALLACEPANCHER GROUP

144 Emeryville Drive, Suite 200
Cranberry Township, PA 16066
www.wallacepancher.com
Phone: (724) 881-0155
Engineering and Environmental Professionals

WALLACEPANCHER GROUP

144 Emeryville Drive, Suite 200
Cranberry Township, PA 16066
www.wallacepancher.com
Phone: (724) 881-0155
Engineering and Environmental Professionals

WALLACEPANCHER GROUP

144 Emeryville Drive, Suite 200
Cranberry Township, PA 16066
www.wallacepancher.com
Phone: (724) 881-0155
Engineering and Environmental Professionals

WALLACEPANCHER GROUP

144 Emeryville Drive, Suite 200
Cranberry Township, PA 16066
www.wallacepancher.com
Phone: (724) 881-0155
Engineering and Environmental Professionals

WALLACEPANCHER GROUP

144 Emeryville Drive, Suite 200
Cranberry Township, PA 16066
www.wallacepancher.com
Phone: (724) 881-0155
Engineering and Environmental Professionals

WALLACEPANCHER GROUP

144 Emeryville Drive, Suite 200
Cranberry Township, PA 16066
www.wallacepancher.com
Phone: (724) 881-0155
Engineering and Environmental Professionals

WALLACEPANCHER GROUP

144 Emeryville Drive, Suite 200
Cranberry Township, PA 16066
www.wallacepancher.com
Phone: (724) 881-0155
Engineering and Environmental Professionals

WALLACEPANCHER GROUP

144 Emeryville Drive, Suite 200
Cranberry Township, PA 16066
www.wallacepancher.com
Phone: (724) 881-0155
Engineering and Environmental Professionals

WALLACEPANCHER GROUP

144 Emeryville Drive, Suite 200
Cranberry Township, PA 16066
www.wallacepancher.com
Phone: (724) 881-0155
Engineering and Environmental Professionals

WALLACEPANCHER GROUP

144 Emeryville Drive, Suite 200
Cranberry Township, PA 16066
www.wallacepancher.com
Phone: (724) 881-0155
Engineering and Environmental Professionals

WALLACEPANCHER GROUP

144 Emeryville Drive, Suite 200
Cranberry Township, PA 16066
www.wallacepancher.com
Phone: (724) 881-0155
Engineering and Environmental Professionals

WALLACEPANCHER GROUP

144 Emeryville Drive, Suite 200
Cranberry Township, PA 16066
www.wallacepancher.com
Phone: (724) 881-0155
Engineering and Environmental Professionals

WALLACEPANCHER GROUP

144 Emeryville Drive, Suite 200
Cranberry Township, PA 16066
www.wallacepancher.com
Phone: (724) 881-0155
Engineering and Environmental Professionals

WALLACEPANCHER GROUP

144 Emeryville Drive, Suite 200
Cranberry Township, PA 16066
www.wallacepancher.com
Phone: (724) 881-0155
Engineering and Environmental Professionals

WALLACEPANCHER GROUP

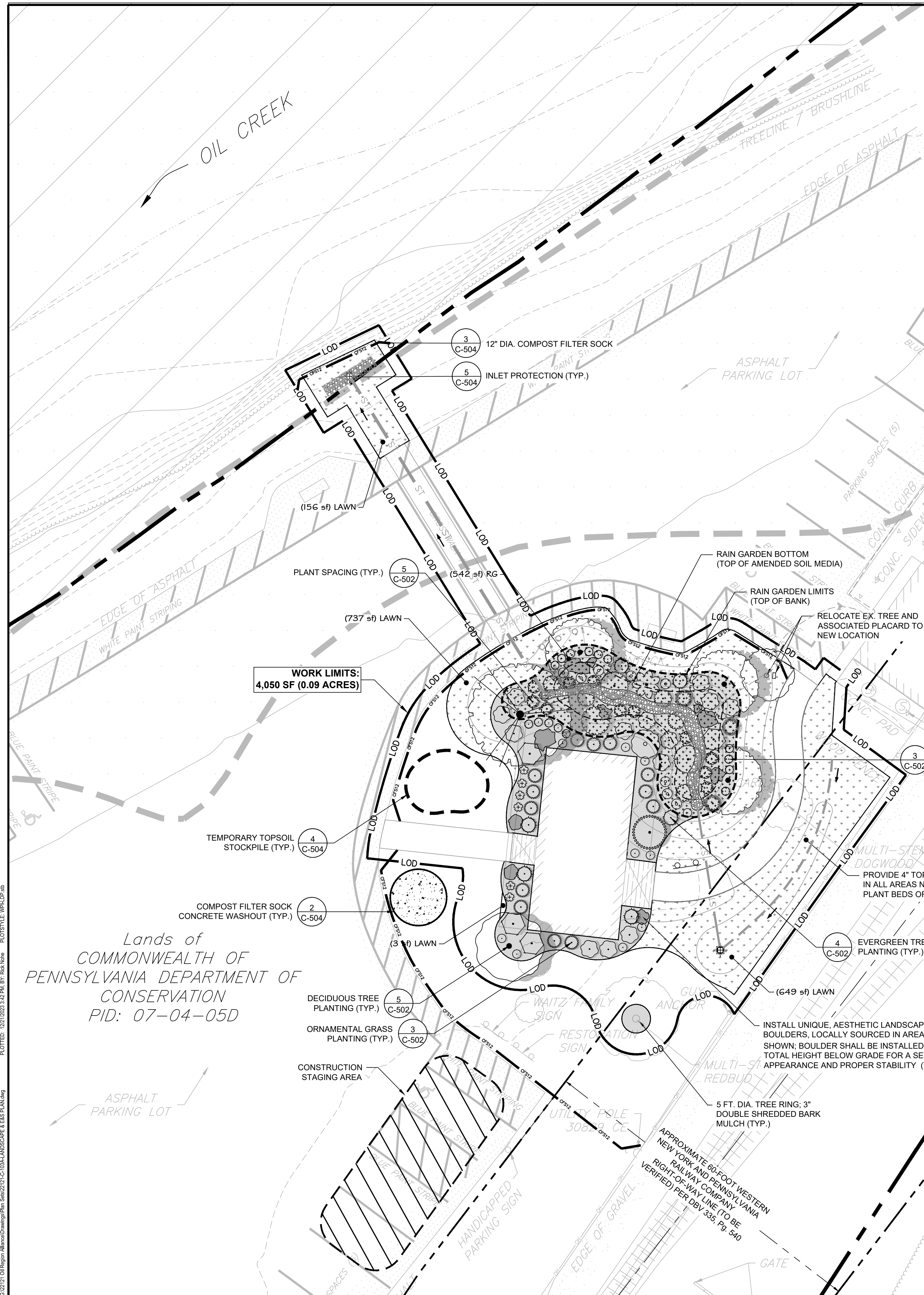
144 Emeryville Drive, Suite 200
Cranberry Township, PA 16066
www.wallacepancher.com
Phone: (724) 881-0155
Engineering and Environmental Professionals

WALLACEPANCHER GROUP

144 Emeryville Drive, Suite 200
Cranberry Township, PA 16066
www.wallacepancher.com
Phone: (724) 881-0155
Engineering and Environmental Professionals

WALLACEPANCHER GROUP

144 Emeryville Drive, Suite 200
Cranberry Township, PA 16066
www.wallacepancher.com
Phone: (724) 881-0155



PLANT SCHEDULE RAIN GARDEN SITE

SYMBOL	CODE	QTY	BOTANICAL NAME	COMMON NAME	SIZE	CONTAINER
DECIDUOUS TREES						
	AGJ	1	ACER GRISEUM 'JFS KW8AGR'	FIREBURST® PAPERBARK MAPLE	2.5" CAL.	B&B
	AG	3	AMELANCHIER X GRANDIFLORA 'AUTUMN BRILLIANCE' MULTI-STEM	AUTUMN BRILLIANCE APPLE SERVICEBERRY	8' HT.	B&B
	NS	1	NYSSA SYLVATICA 'WFH1' TM	TUPELO TOWER SOUR GUM	2" CAL.	B&B
EVERGREEN TREES						
	JV	6	JUNIPERUS VIRGINIANA 'TAYLOR'	TAYLOR EASTERN RED CEDAR	6' HT.	B&B
FLOWERING TREES						
	CC	1	CERCIS CANADENSIS 'RUBY FALLS'	RUBY FALLS WEeping EASTERN REDBUD	6' HT.	POT
	MG	1	MAGNOLIA GRANDIFLORA 'TMGH' TM	ALTA SOUTHERN MAGNOLIA	6' HT.	POT
SHRUBS						
	AL	15	ARONIA MELANOCARPA 'UCONNAM165'	LOW SCAPE MOUND® BLACK CHOKEBERRY	#2	CONT
	CR	4	CLETHRA ALNIFOLIA 'RUBY SPICE'	RUBY SPICE SUMMERSWEET	#5	CONT
	CA	1	CORNUS ALBA 'BUD'S YELLOW'	BUD'S YELLOW TATARIAN DOGWOOD	36"	CONT
	HK	11	HYPERICUM KALMIANUM 'COBALT-N-GOLD' DECIDUOUS	KALM ST. JOHNSWORT	#3	CONT
	IG	2	ILEX GLABRA	INKBERRY HOLLY	3' HT.	B&B
	IV	13	ITEA VIRGINICA 'SPRICH' TM	LITTLE HENRY SWEETSPIRE	#3	CONT
	PO	5	PHYSOCARPUS OPULIFOLIUS 'N5'	PANTHER® NINEBARK	#5	CONT
	RA	1	RHUS AROMATICA 'GRO-Low' DECIDUOUS, HAIRY FRUITS	GRO-Low FRAGRANT SUMAC	#3	CONT
"FORMAL GARDEN"						
	HA	10	HYDRANGEA ARBORESCENS 'NCHAS'	INVINCIBELLE WEE WHITE HYDRANGEA	#2	CONT
ORNAMENTAL GRASSES						
	CK	13	CALAMAGROSTIS X ACUTIFLORA 'KARL FOERSTER'	KARL FOERSTER FEATHER REED GRASS	#2	CONT
	PV	3	PANICUM VIRGATUM 'HOT ROD'	HOT ROD SWITCH GRASS	#3	CONT.
PERENNIALS						
	EK	8	ECHINACEA X 'NECHKW' TM	KISMET WHITE CONEFLOWER	#1	CONT
	RS	6	RUDBECKIA HIRTA 'INDIAN SUMMER'	INDIAN SUMMER BLACK-EYED SUSAN	#1	CONT
GROUND COVERS						
	LAWN	1,565 SF	LAWN SEED	DROUGHT TOLERANT FESCUE BLEND	SEED	
	RG	542 SF	RAIN GARDEN MIX REFER TO ERNST SEEDS' PRODUCTS	ERNMX-180	SEED	

LEGEND - LANDSCAPE

- SUBJECT PROPERTY (NOT SURVEYED)
- ADJOINING PROPERTY
- RIGHT-OF-WAY
- LOD WORK LIMITS
-
 RAIN GARDEN: AMENDED SOIL, 18" DEPTH, ERNMX-180 RAIN GARDEN MIX
-
 MULCH, 3" DEPTH MIN.
-
 LAWN SEED
-
 DECIDUOUS TREES
-
 EVERGREEN TREES
-
 SHRUBS
-
 PERENNIALS / ORNAMENTAL GRASSES
-
 LOCALLY SOURCED, HAND-PICKED LANDSCAPE BOULDERS

LEGEND - E&S

-
 12" DIA. COMPOST FILTER SOCK
-
 INLET FILTER BAG
-
 COMPOST SOCK
-
 CONCRETE WASHOUT PIT
-
 SOIL STOCKPILE

SHEET NOTES - E&S

1. ACT 287 - 1974, OR AS AMENDED IN COMPLIANCE WITH ACT 287 PRIOR TO EXCAVATION, THE CONTRACTOR MUST CALL THIS NUMBER AND NOTIFY ALL UTILITY COMPANIES OF HIS INTENTION TO EXCAVATE NO LESS THAN THREE (3) WORKING DAYS PRIOR TO EXCAVATION. LOCAL PHONE NUMBER IS 412-323-7100. STATEWIDE PHONE NUMBER IS 1-800-242-1776.
2. ALL WORK SHALL BE PERFORMED IN ACCORDANCE WITH THE PADEP REGULATIONS. ALL STORM WATER BEST MANAGEMENT PRACTICES SHALL BE SUBMITTED TO THE ENGINEER FOR APPROVAL PRIOR TO IMPLEMENTATION.
3. SEE EROSION AND SEDIMENT POLLUTION CONTROL DETAILS FOR GENERAL CONSTRUCTION NOTES AND CONSTRUCTION SEQUENCING.
4. THE CONTRACTOR SHALL BE RESPONSIBLE FOR PERFORMING ALL MEASURES REQUIRED TO CONTROL EROSION IN ACCORDANCE WITH THE EROSION AND SEDIMENT POLLUTION CONTROL PLANS AND PADEP REGULATIONS.
5. INSTALL EROSION CONTROL BLANKET OR EQUIVALENT ON ALL SLOPES 3:1 OR STEEPER, UNLESS OTHERWISE NOTED.
6. THE CONTRACTOR SHALL PERFORM ALL CONSTRUCTION IN A MANNER TO PROTECT EXISTING UTILITIES. NO UTILITIES SHALL BE REMOVED FROM SERVICE WITHOUT APPROVAL OF THE UTILITY. ALL DAMAGED UTILITIES SHALL BE REPAIRED BY THE AFFECTED UTILITY WITH THE CONTRACTOR BEARING ALL COSTS ASSOCIATED WITH THE REPAIR.
7. CONTRACTOR TO FOLLOW TEMPORARY AND PERMANENT STABILIZATION TABLES ON EROSION AND SEDIMENT POLLUTION CONTROL DETAIL SHEETS.
8. IN THE CASE BULK EARTHWORK IS BEING PERFORMED DURING FREEZING CONDITIONS (DURING WINTER), UNDER NO CONDITIONS WILL FROZEN OR UNSUITABLE FILL MATERIAL THAT WILL POTENTIALLY EFFECT THE INTEGRITY OF THE SLOPES BE ACCEPTABLE TO USE.
9. STORMWATER DISCHARGE DURING CONSTRUCTION IS TO BE TREATED BY PERIMETER COMPOST FILTER SOCK AND INLET PROTECTION, A TEMPORARY CONSTRUCTION ENTRANCE, EROSION CONTROL BLANKET, COMPOST FILTER SOCK AND TEMPORARY SEED WILL BE UTILIZED TO MINIMIZE THE AMOUNT OF SEDIMENT LADEN WATER FROM LEAVING THE SITE.
10. LIMIT OF DISTURBANCE SHOWN 2'-0" OUTSIDE OF TRUE LIMIT FOR CLARITY PURPOSES ONLY.

SHEET NOTES - LANDSCAPE

1. ALL TREE LOCATIONS SHALL BE STAKED IN THE FIELD AND LOCATIONS APPROVED BY LANDSCAPE ARCHITECT PRIOR TO PLANTING.
2. NOTIFY ALL UTILITY COMPANIES AND LOCATE ALL UTILITIES PRIOR TO EXCAVATING PLANT PITS. PLANT LOCATIONS MAY BE ADJUSTED IN THE FIELD TO AVOID INTERFERENCE WITH UNDERGROUND UTILITIES.
3. ALL PLANT MATERIAL SHALL BE OF NURSERY STOCK QUALITY AS DEFINED BY THE AMERICAN NURSERY AND LANDSCAPE ASSOCIATION. ALL PLANT MATERIAL SHALL BE GUARANTEED TO LIVE AT LEAST 12 MONTHS FOLLOWING INSTALLATION. SEE SPECIFICATION WARRANTY.
4. ALL NON-BIODEGRADABLE ROOT WRAPPING TO BE REMOVED COMPLETELY BEFORE PLANTING.
5. PROVIDE 3" DOUBLE GROUND BARK MULCH OR RIVER ROCK AT ALL PLANTING AREAS.
6. ALL PLANT MATERIAL SHALL BE APPROVED UPON ARRIVAL TO THE SITE, UNLESS OTHERWISE NOTIFIED.
7. SEED ALL AREAS DISTURBED BY CONSTRUCTION NOT OTHERWISE CONTAINING PLANTING BEDS, SLOPE SEEDING, SIDEWALKS, BUILDINGS, ETC. WITH 4" MIN. DEPTH TOPSOIL AND LAWN SEEDING. THIS INCLUDES ANY DISTURBANCE ASSOCIATED WITH ANY WORK ON SITE.
8. SPACE PLANTS EQUALLY WITHIN ALLOCATED SPACE SHOWN.
9. ALL DEAD AND DYING LANDSCAPING WILL BE REPLACED NO LATER THAN THE SUBSEQUENT PLANTING SEASON.



WALLACEPANCHER GROUP
144 Emeryville Drive, Suite 200
Cranberry Township, PA 16066
Phone: (724) 881-0155
www.wallacepancher.com

OIL REGION ALLIANCE
217 ELM STREET
OIL CITY, PA 16201

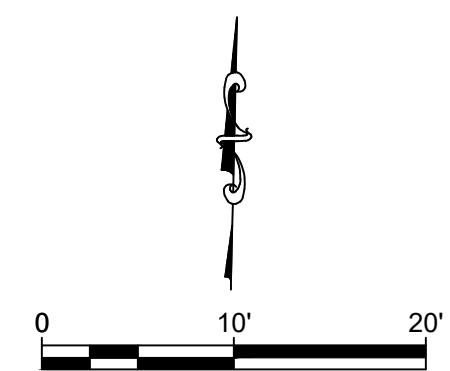
PREPARED FOR:
OIL REGION ALLIANCE OF BUSINESS, INDUSTRY & TOURISM
217 ELM STREET
OIL CITY, PA 16201

PRELIMINARY PLAN NOT FOR CONSTRUCTION

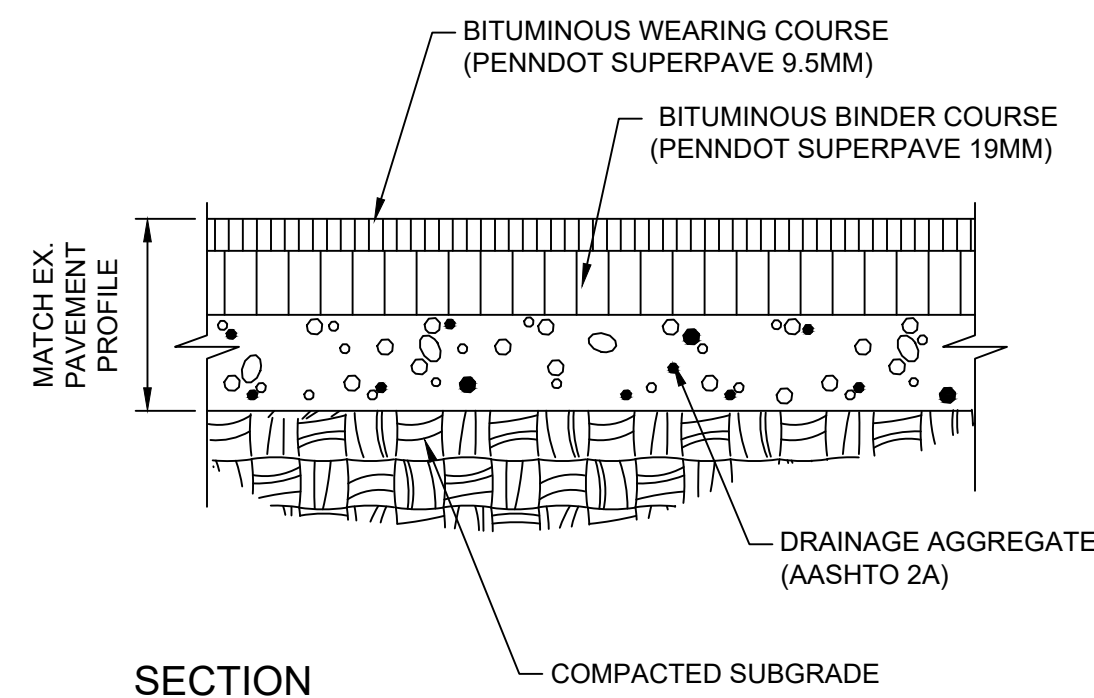
REVISION INFORMATION:	DATE:	CHECKED:	DRAWN:

RAIN GARDEN- LANDSCAPE & EROSION CONTROL PLAN

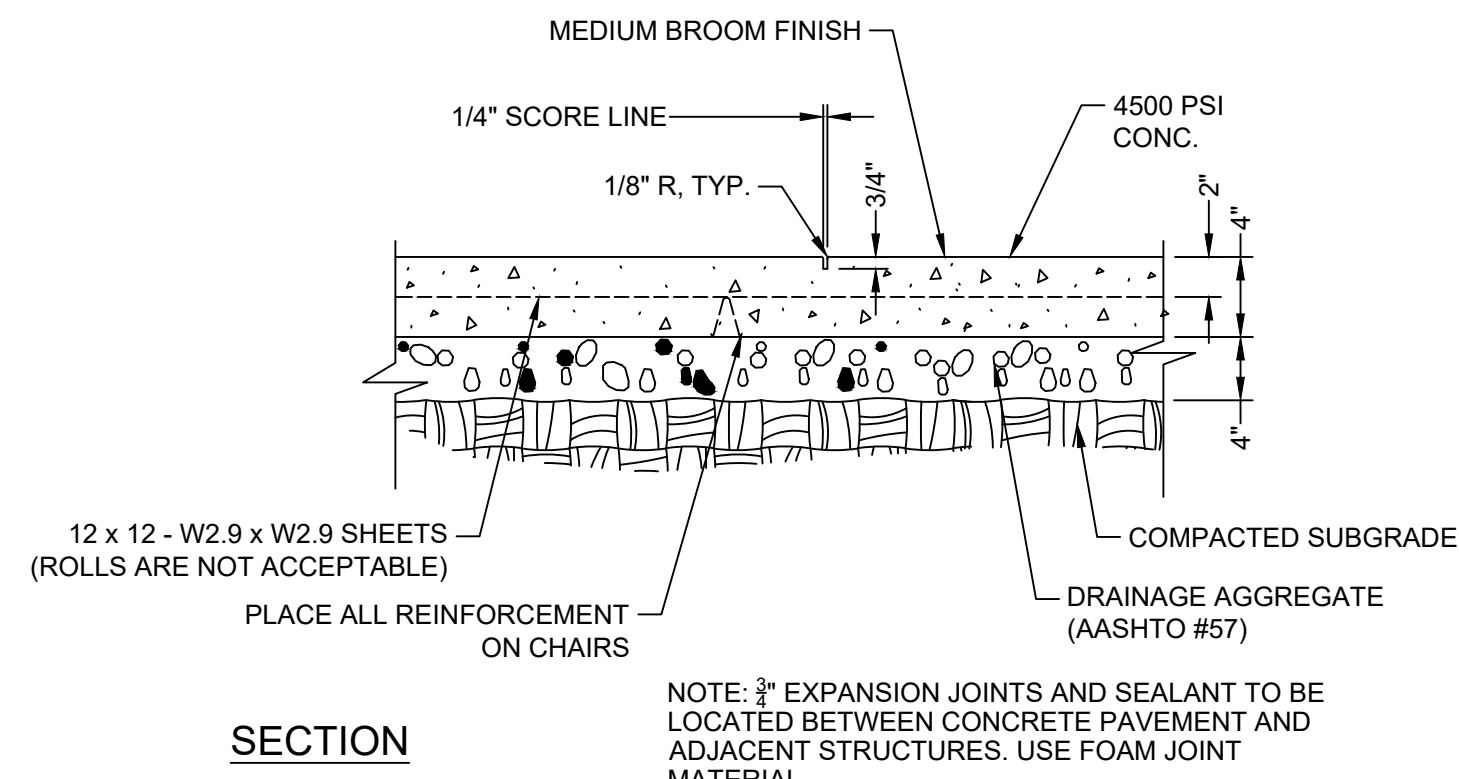
DATE: 12/21/23
SHEET NO: C-102C
PROJ. NO: 22121



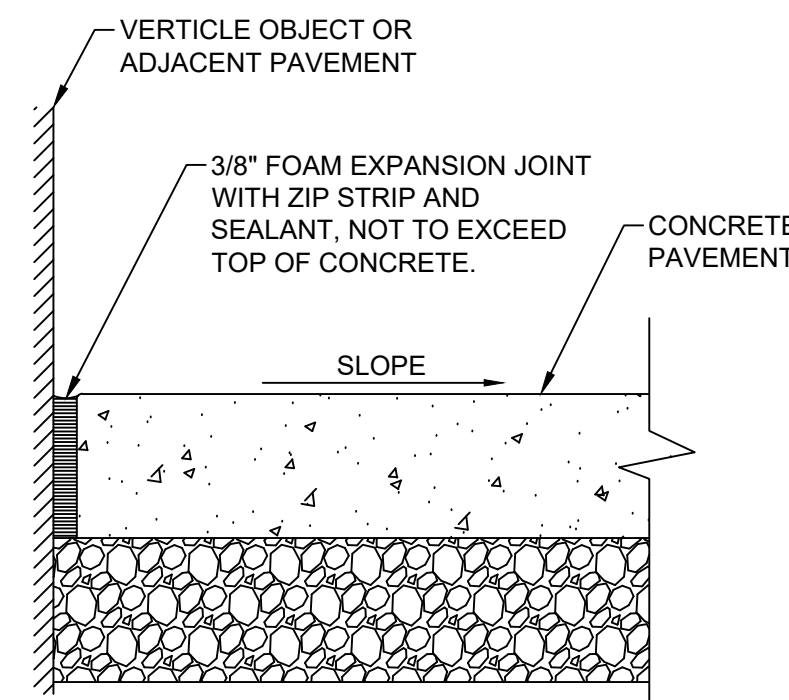
PLOTTED: 12/21/2023 3:42 PM BY: 106110608 PLOTSTYLE: WPLD2018
 C:\22121\DR\Region\Info\Drawings\Files\22121-C-102A-LANDSCAPE E&S PLAN.dwg



1 BITUMINOUS PAVING - REGULAR DUTY
NTS

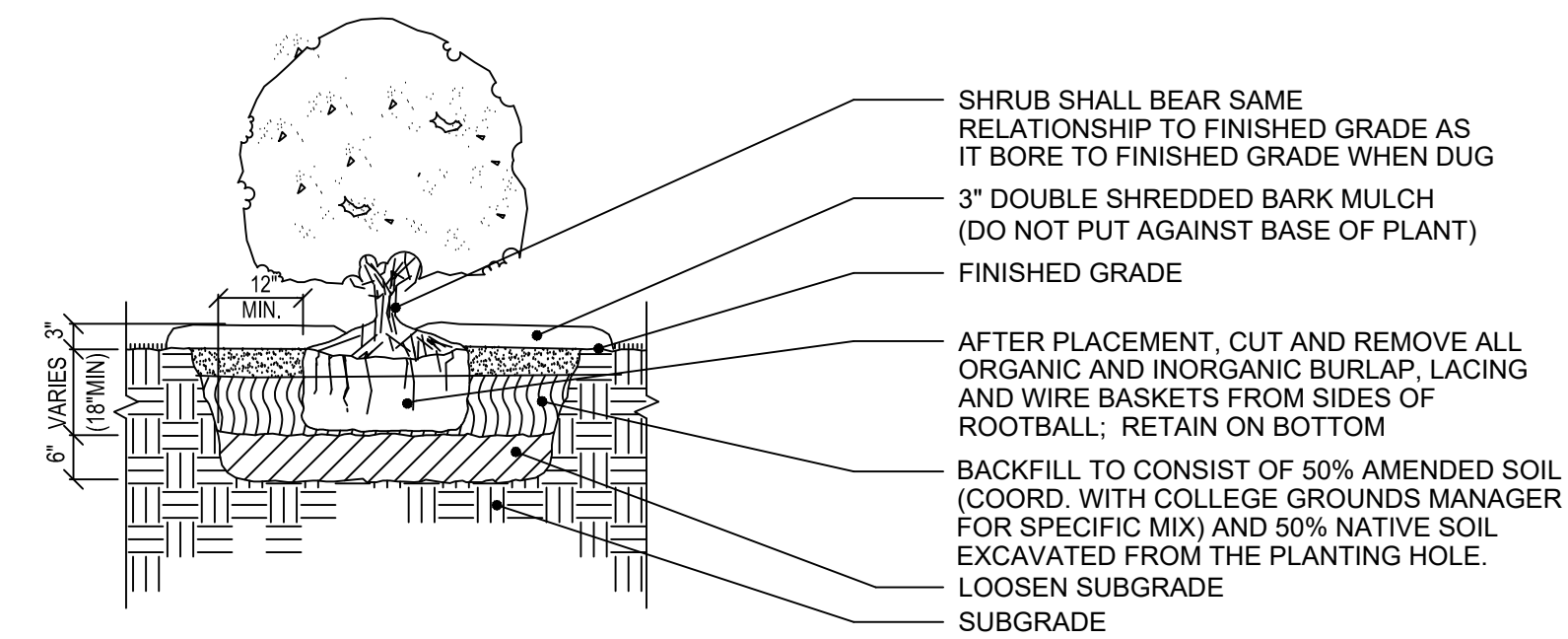


2 CONCRETE PAVING - REGULAR DUTY
NTS



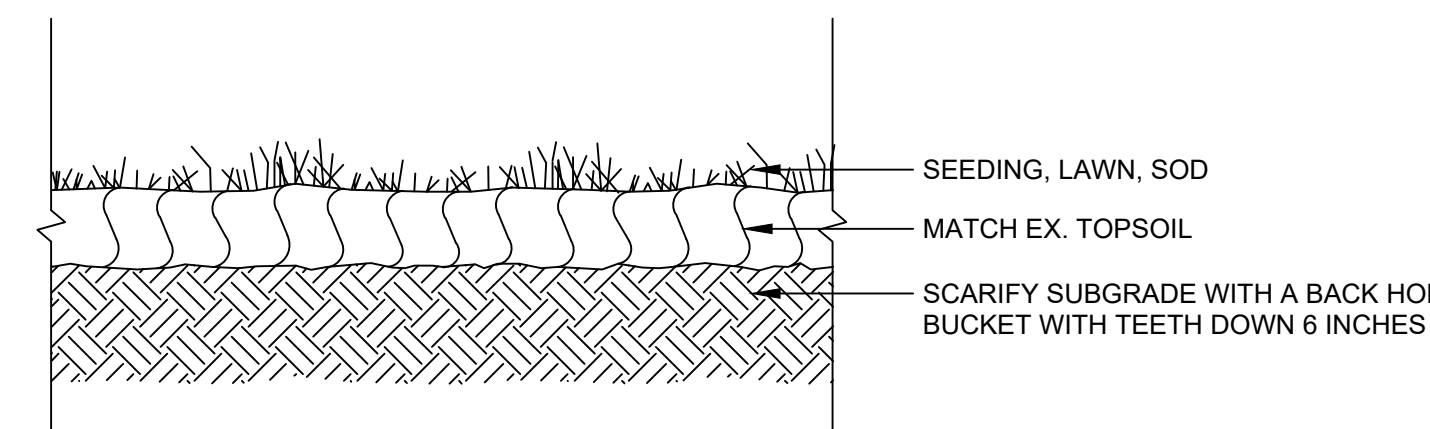
3 EDGE JOINT
NTS

- NOTES:
- FOR CONTAINER-GROWN SHRUBS, USE FINGERS OR SMALL HAND TOOLS TO PULL THE ROOTS OUT OF THE OUTER LAYER OF POTTING SOIL; THEN CUT OR PULL APART ANY ROOTS CIRCLING THE PERIMETER OF THE CONTAINER.

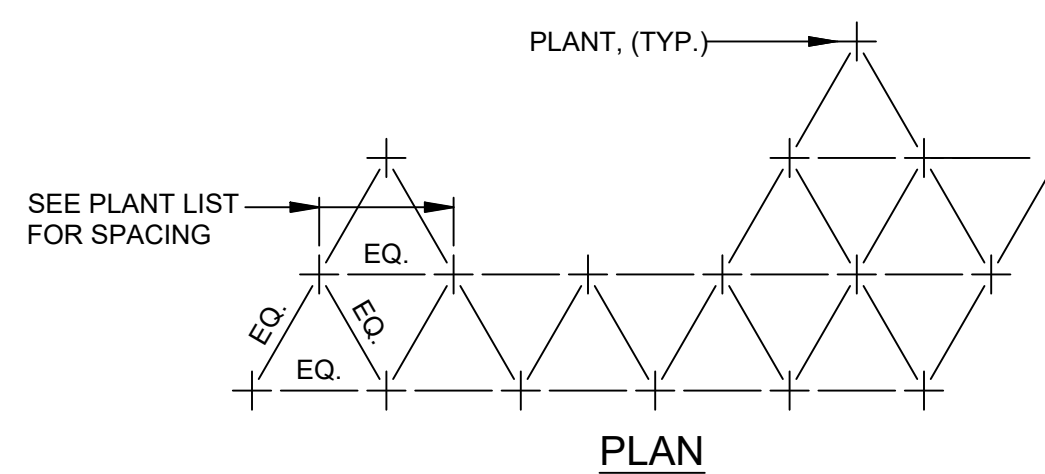


4 SHRUB
NTS

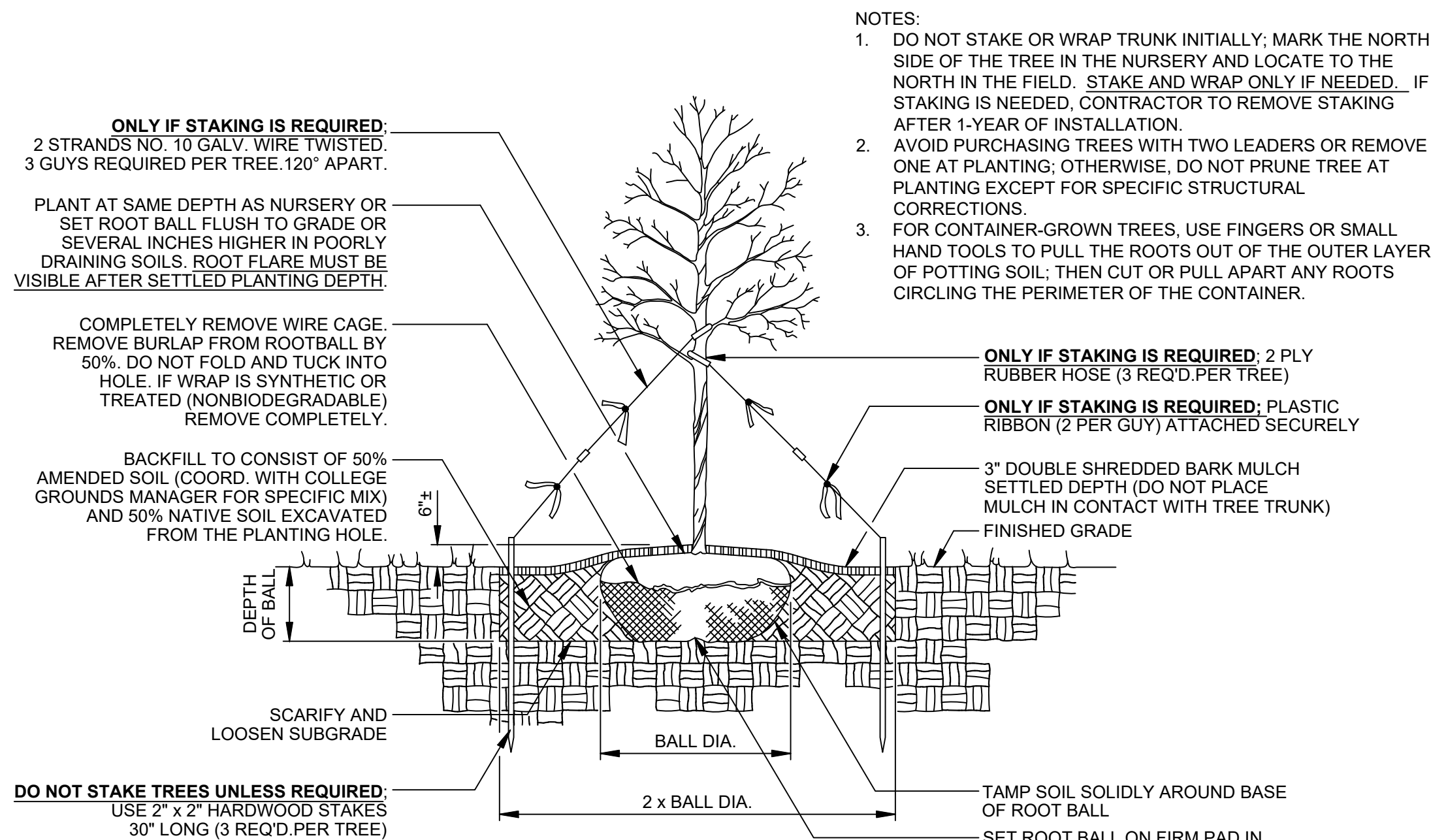
- NOTES:
- NO LOOSE STRAW MULCH IS TO BE USED TO COVER SEED.
 - CONTRACTOR MUST USE EITHER A 1/2\"/>



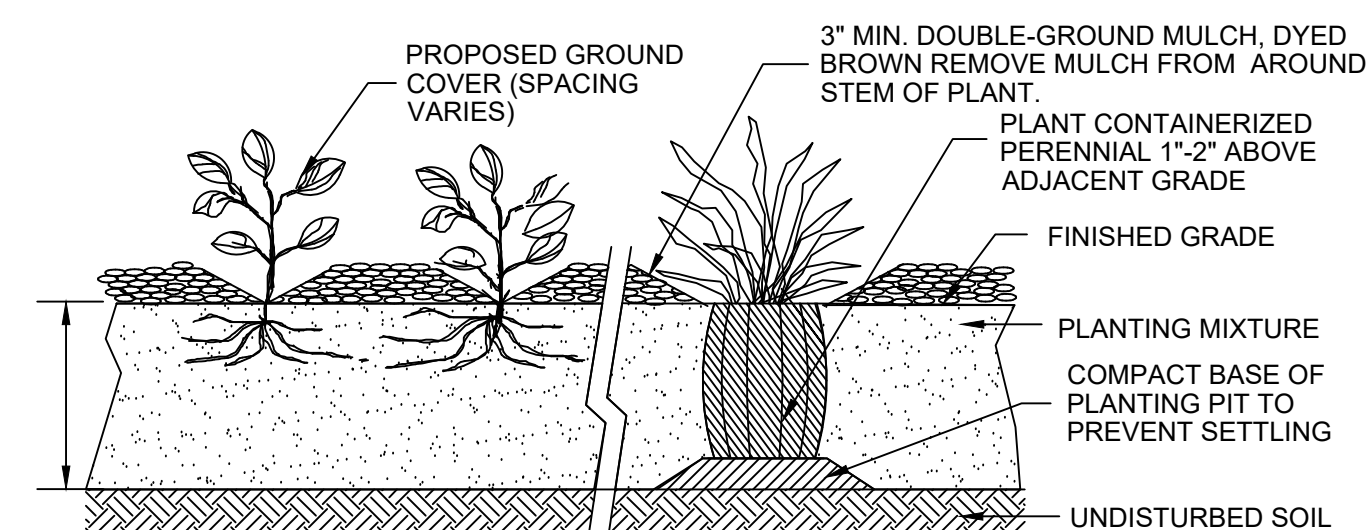
5 LAWN
NTS



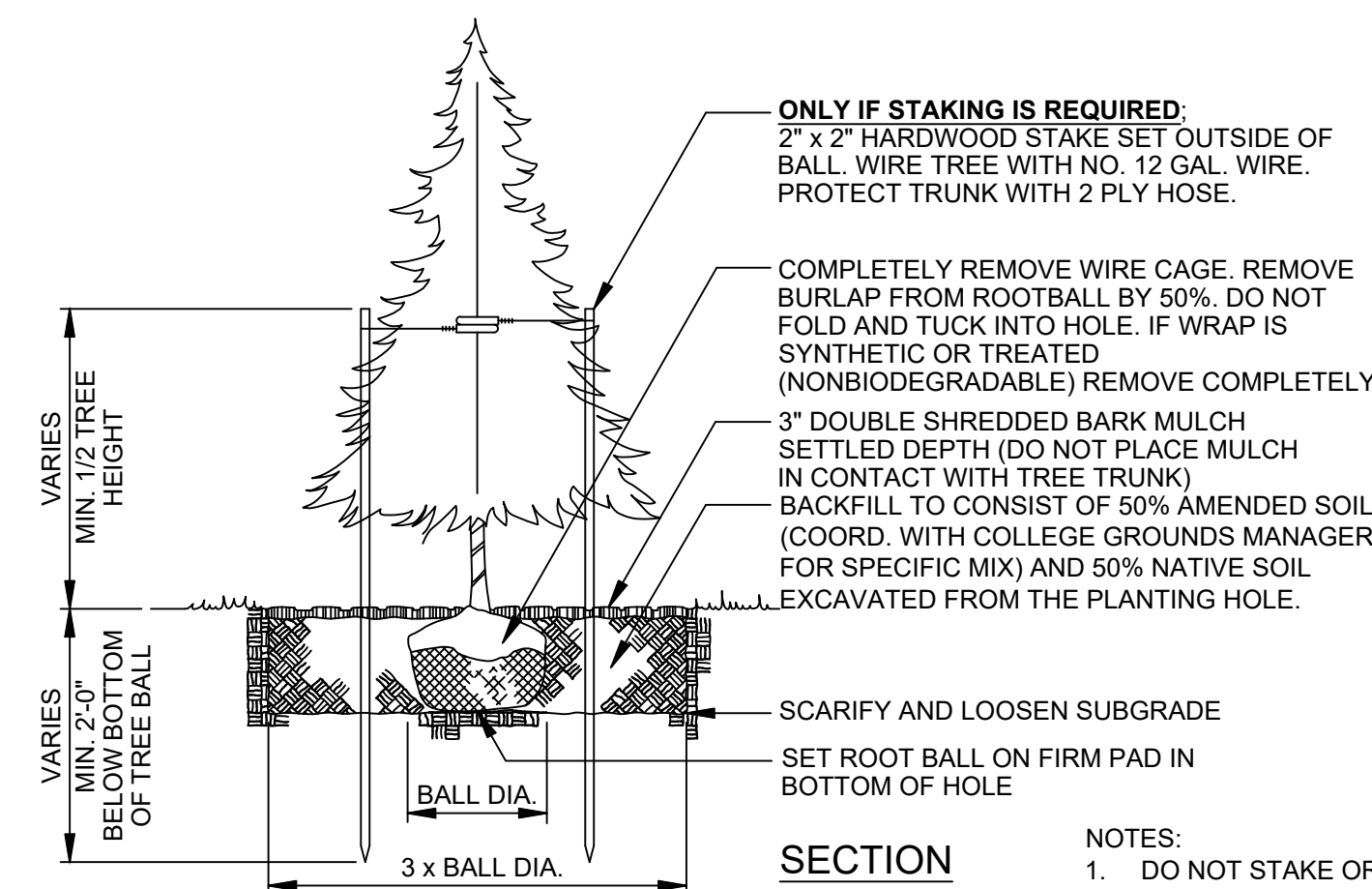
6 PLANT SPACING DIAGRAM
NTS



8 DECIDUOUS TREE PLANTING
NTS



7 ORNAMENTAL GRASS / PERENNIAL PLANTING
NTS



9 EVERGREEN TREE PLANTING
NTS



WALLACEPANCHER GROUP
144 Emeryville Drive, Suite 200
Cranberry Township, PA 16066
Phone: (724) 861-0155
www.wallacepancher.com
Engineering and Environmental Professionals

PREPARED FOR:
OIL REGION ALLIANCE OF BUSINESS,
INDUSTRY & TOURISM
217 ELM STREET
OIL CITY, PA 16201

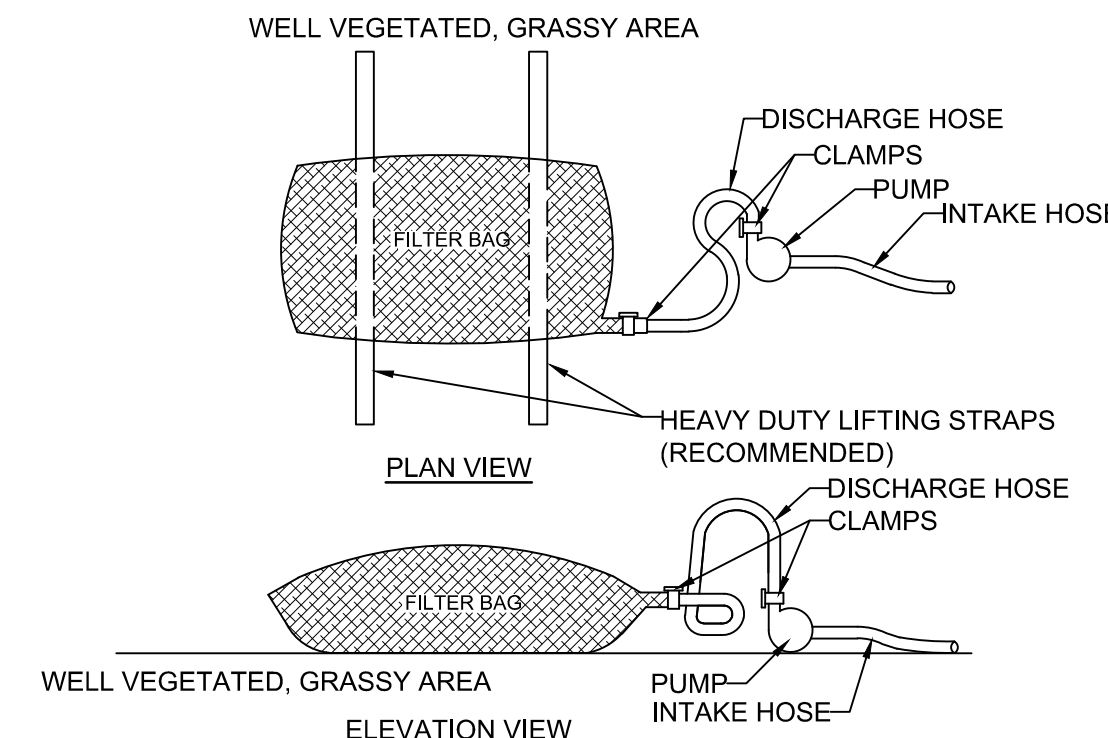
PRELIMINARY
PLAN
NOT FOR
CONSTRUCTION

REVISION INFORMATION:

NO.	DATE	DESCRIPTION

SITE DETAILS

DATE: 12/21/23
SHEET NO.: C-501
PROJ. NO.: 22121



NOTES:
 LOW VOLUME FILTER BAGS SHALL BE MADE FROM NON-WOVEN GEOTEXTILE MATERIAL SEWN WITH HIGH STRENGTH, DOUBLE STITCHED "J" TYPE SEAMS. THEY SHALL BE CAPABLE OF TRAPPING PARTICLES LARGER THAN 150 MICRONS. HIGH VOLUME FILTER BAGS SHALL BE MADE FROM WOVEN GEOTEXTILES THAT MEET THE FOLLOWING STANDARDS:

PROPERTY	TEST METHOD	MINIMUM STANDARD
AVG. WIDE WIDTH STRENGTH	ASTM D-4584	60 LBN
GRAB TENSILE	ASTM D-4632	205 LB
PUNCTURE	ASTM D-4633	110 LB
MULLEN BURST	ASTM D-3786	350 PSI
UV RESISTANCE	ASTM D-4355	70%
ASH % RETAINED	ASTM D-4751	80 SIEVE

A SUITABLE MEANS OF ACCESSING THE BAG WITH MACHINERY REQUIRED FOR DISPOSAL PURPOSES SHALL BE PROVIDED. FILTER BAGS SHALL BE REPLACED WHEN THEY BECOME 1/2 FULL OF SEDIMENT. SPARE BAGS SHALL BE KEPT AVAILABLE FOR REPLACEMENT OF THOSE THAT HAVE FAILED OR ARE FILLED. BAGS SHALL BE PLACED ON STRAPS TO FACILITATE REMOVAL UNLESS BAGS COME WITH LIFTING STRAPS ALREADY ATTACHED.

BAGS SHALL BE LOCATED IN WELL-VEGETATED (GRASSY) AREA, AND DISCHARGE ONTO STABLE, EROSION RESISTANT AREAS. WHERE THIS IS NOT POSSIBLE, A GEOTEXTILE UNDERLAYMENT AND FLOW PATH SHALL BE PROVIDED. BAGS MAY BE PLACED ON FILTER STONE TO INCREASE DISCHARGE CAPACITY. BAGS SHALL NOT BE PLACED ON SLOPES GREATER THAN 5%. FOR SLOPES EXCEEDING 5%, CLEAN ROCK OR OTHER NON-ERODIBLE AND NON-POLLUTING MATERIAL MAY BE PLACED UNDER THE BAG TO REDUCE SLOPE STEEPNESS.

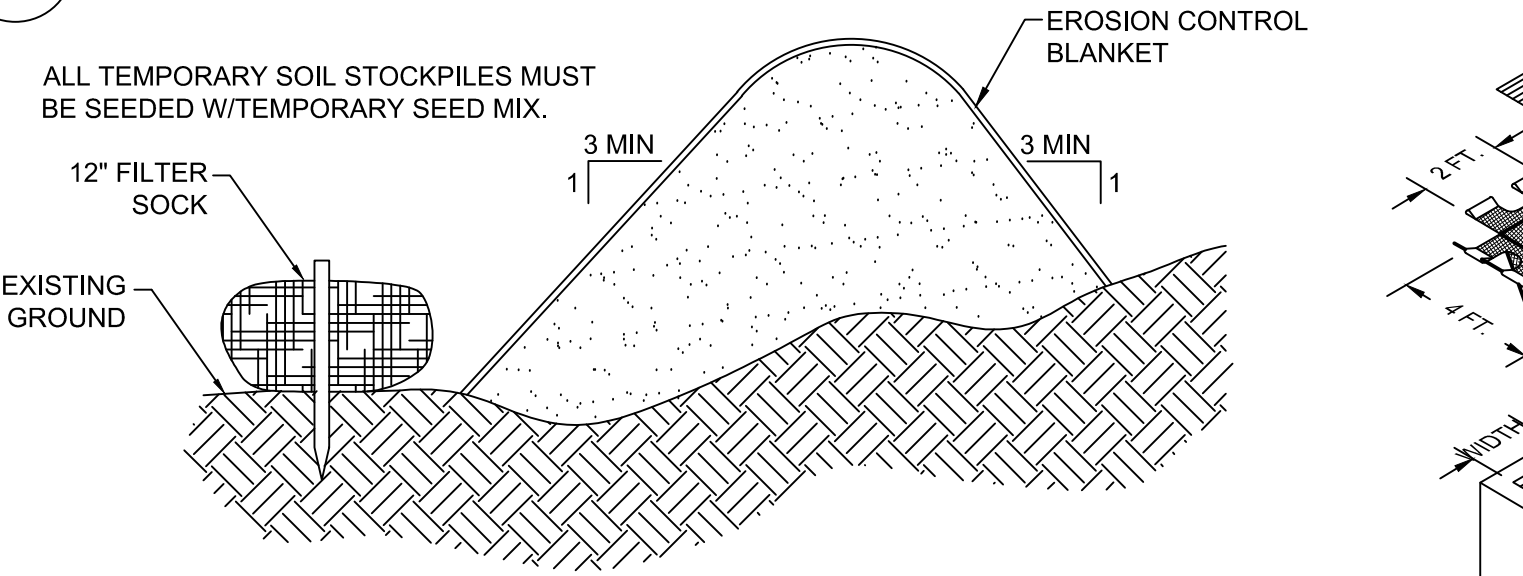
NO DOWNSLOPE SEDIMENT BARRIER IS REQUIRED FOR MOST INSTALLATIONS. COMPOST BERM OR COMPOST FILTER SOCK SHALL BE INSTALLED BELOW BAGS LOCATED IN HO OR EV WATERSHEDS, WITHIN 50 FEET OF ANY RECEIVING SURFACE WATER OR WHERE GRASSY AREA IS NOT AVAILABLE.

THE PUMP DISCHARGE HOSE SHALL BE INSERTED INTO THE BAGS IN THE MANNER SPECIFIED BY THE MANUFACTURER AND SECURELY CLAMPED. A PIECE OF PVC PIPE IS RECOMMENDED FOR THIS PURPOSE.

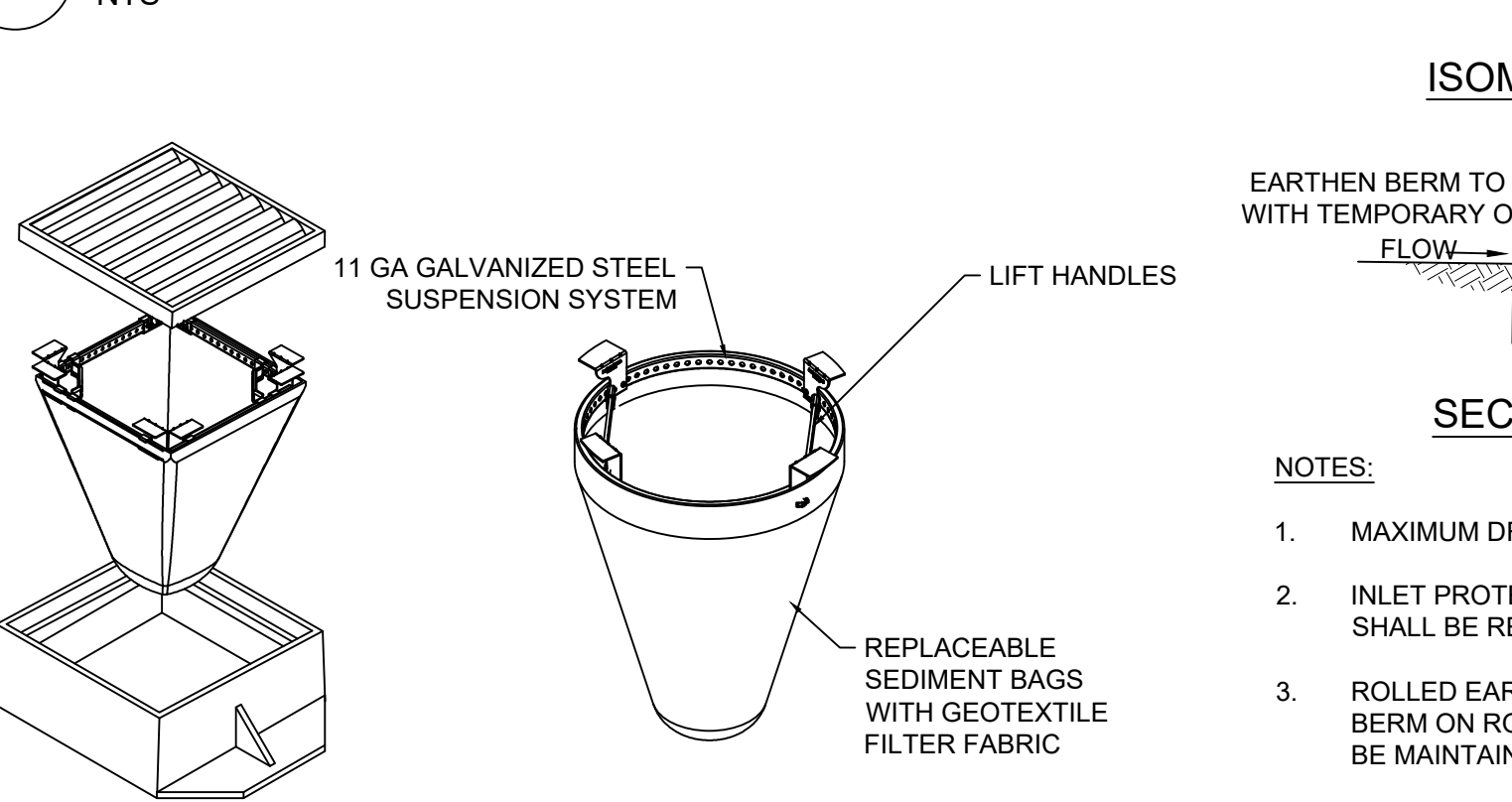
THE PUMPING RATE SHALL BE NO GREATER THAN 750 GPM OR 1/2 THE MAXIMUM SPECIFIED BY THE MANUFACTURER, WHICHEVER IS LESS. PUMP INTAKES SHALL BE FLOATING AND SCREENED.

FILTER BAGS SHALL BE INSPECTED DAILY. IF ANY PROBLEM IS DETECTED, PUMPING SHALL CEASE IMMEDIATELY AND NOT RESUME UNTIL THE PROBLEM IS CORRECTED.

1 PUMPED WATER FILTER BAG
 NTS



4 TEMPORARY SOIL STOCKPILE
 NTS



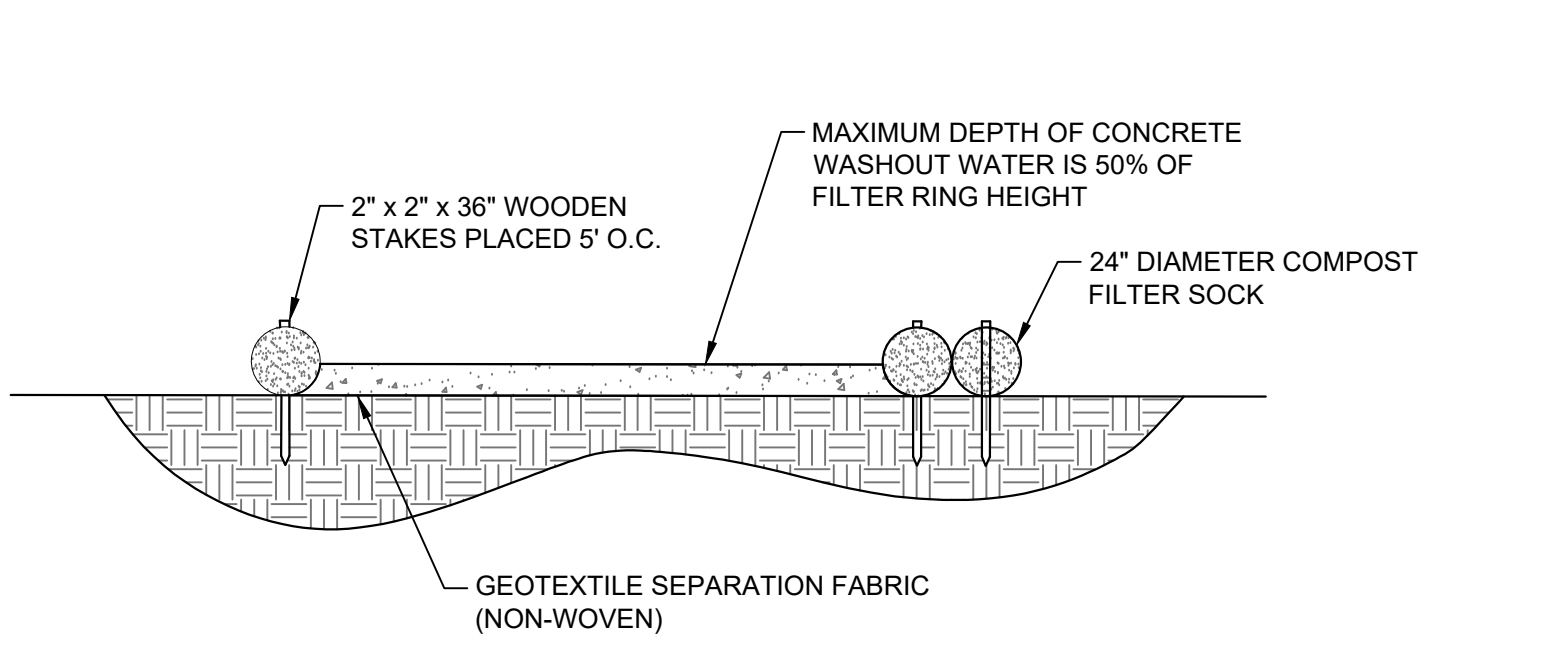
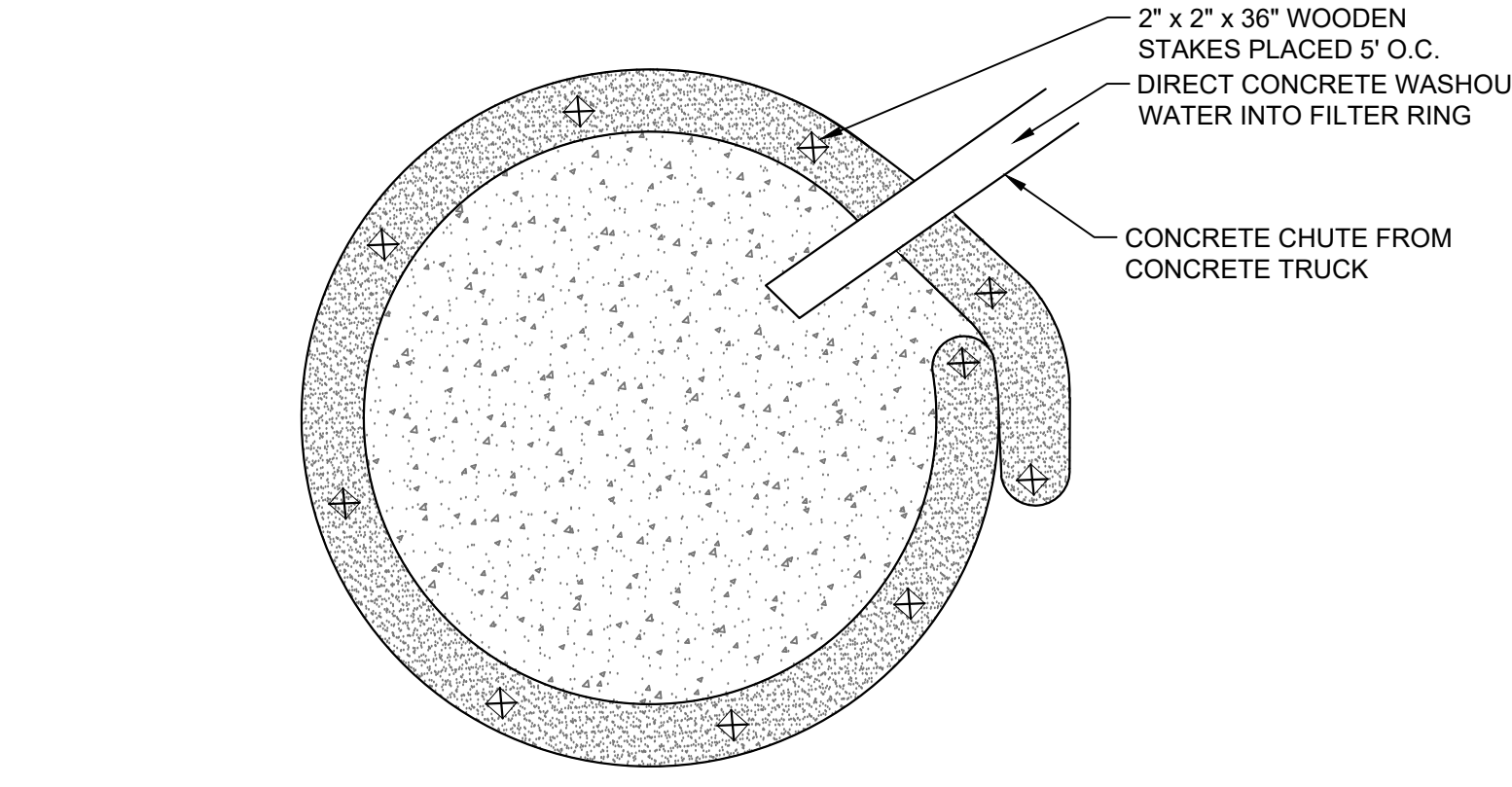
INSTALLATION:

- REMOVE GRATE
- DROP FLEXSTORM INLET FILTER ONTO LOAD BEARING LIP OF CASTING OR CONCRETE STRUCTURE.
- REPLACE GRATE

NOTES:

- ALL FRAMING IS CONSTRUCTED OF CORROSION RESISTANT STEEL (ZINC PLATED OR GALVANIZED) FOR 7 YEAR MINIMUM SERVICE LIFE.

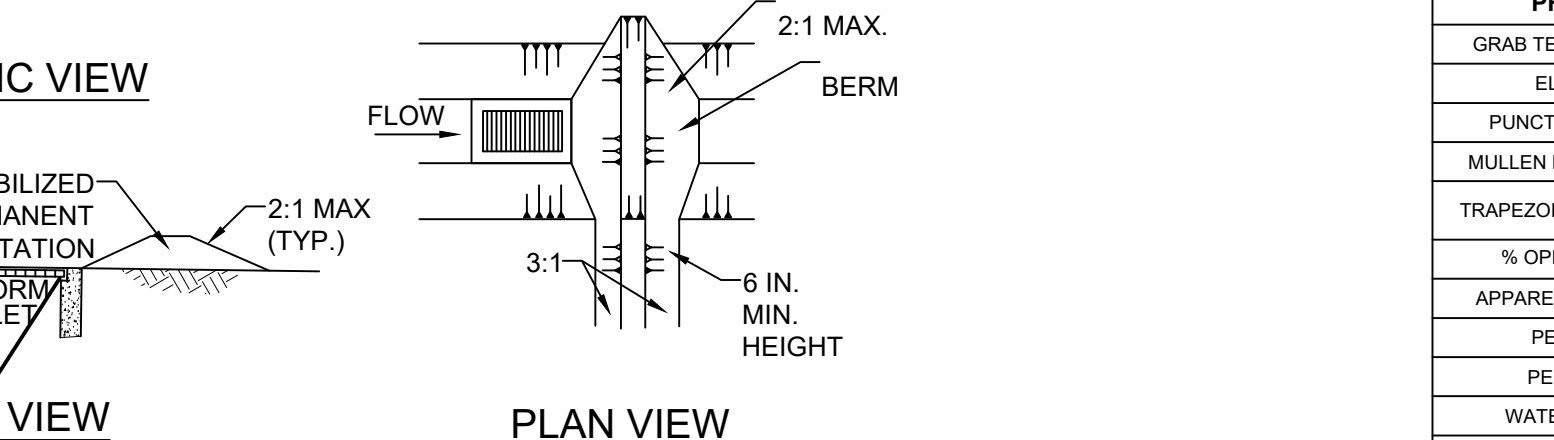
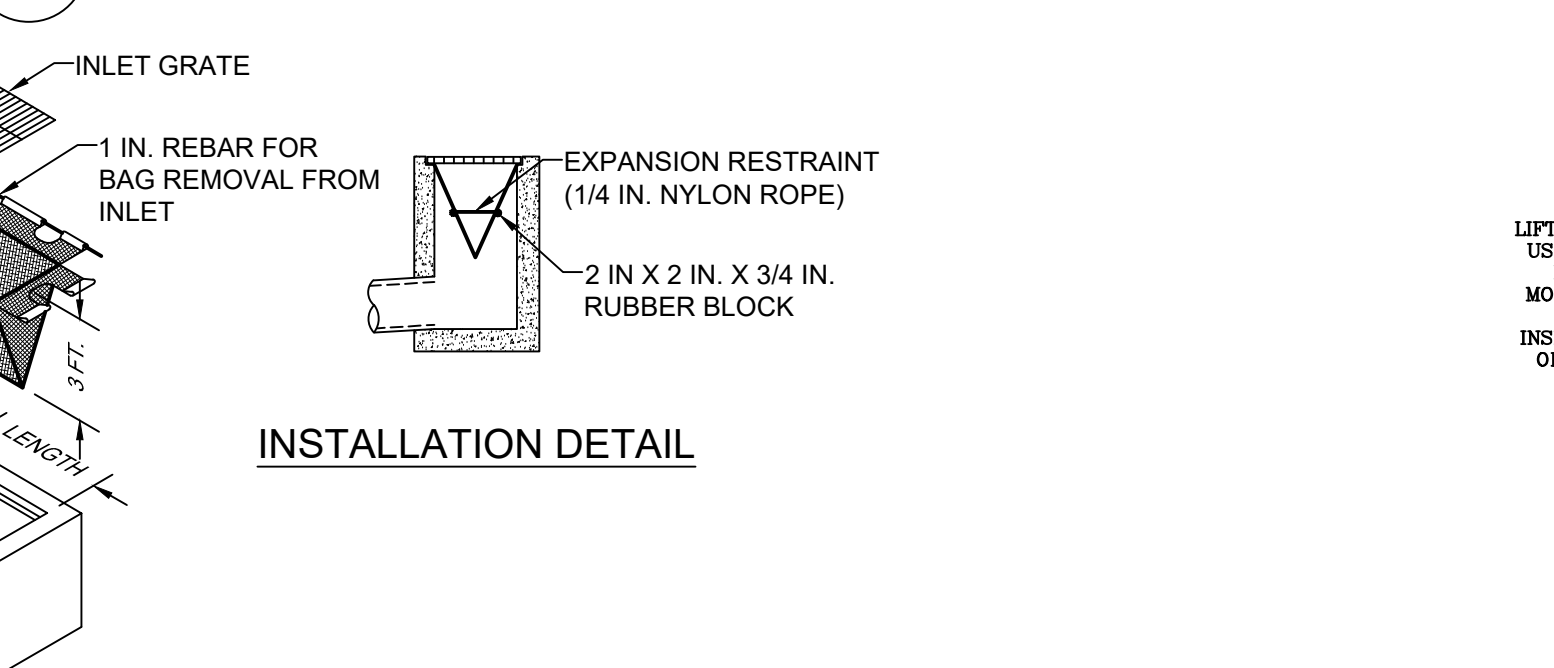
5 INLET PROTECTION
 NTS



NOTES:

- INSTALL ON FLAT GRADE FOR OPTIMUM PERFORMANCE
- 18" DIAMETER FILTER SOCK MAY BE STACKED ONTO DOUBLE 24" DIAMETER SOCKS IN PYRAMIDAL CONFIGURATION FOR ADDED HEIGHT
- A SUITABLE IMPERVIOUS GEOMEMBRANE SHALL BE PLACED AT THE LOCATION OF THE WASHOUT PRIOR TO INSTALLING THE SOCKS.

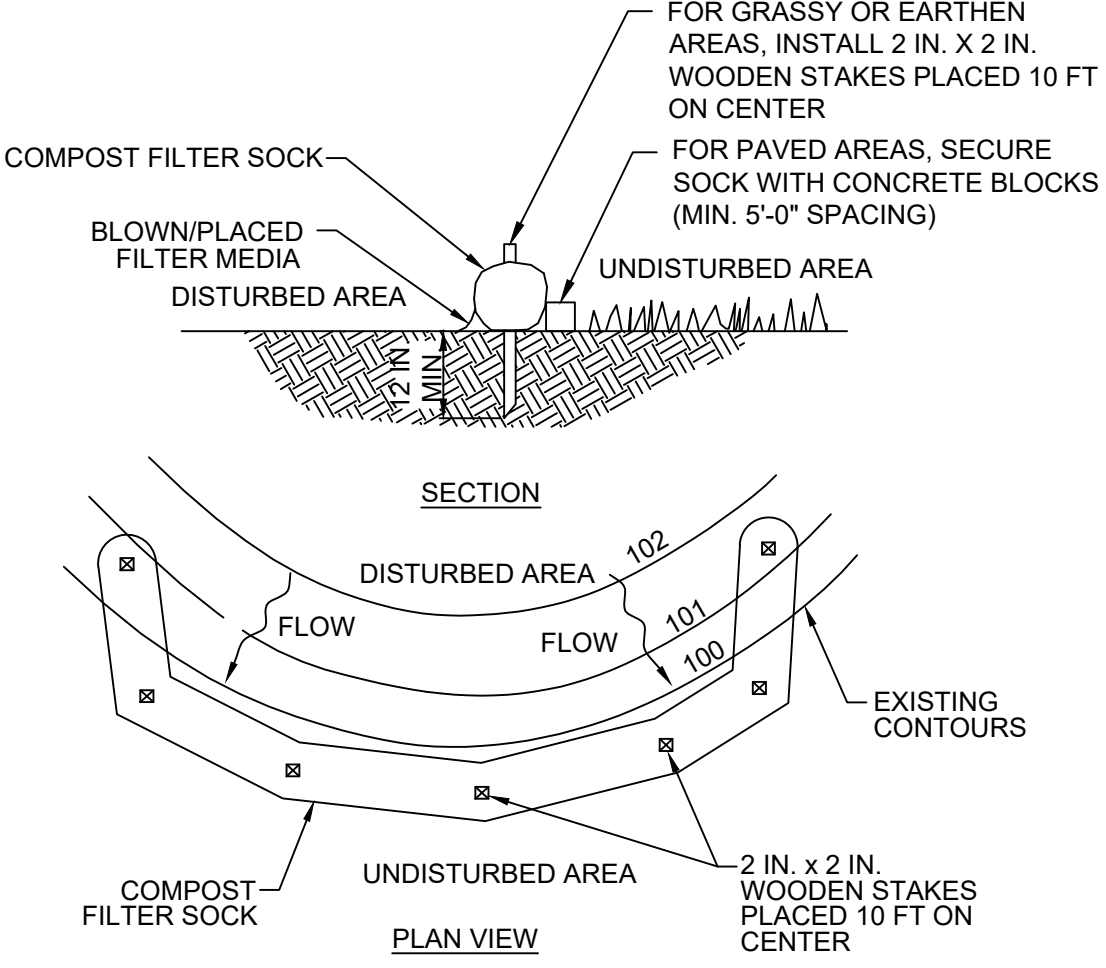
2 COMPOST SOCK CONCRETE WASHOUT
 NTS



NOTES:

- MAXIMUM DRAINAGE AREA = 1/2 ACRE.
- INLET PROTECTION SHALL NOT BE REQUIRED FOR INLET TRIBUTARY TO SEDIMENT BASIN OR TRAP. BERMS SHALL BE REQUIRED FOR ALL INSTALLATIONS.
- ROLLED EARTHEN BERM IN ROADWAY SHALL BE MAINTAINED UNTIL ROADWAY IS STONED. ROAD SUBBASE BERM ON ROADWAY SHALL BE MAINTAINED UNTIL ROADWAY IS PAVED. EARTHEN BERM IN CHANNEL SHALL BE MAINTAINED UNTIL PERMANENT STABILIZATION IS COMPLETED OR REMAIN PERMANENTLY.
- AT A MINIMUM, THE FABRIC SHALL HAVE A MINIMUM GRAB TENSILE STRENGTH OF 120 LBS, A MINIMUM BURST STRENGTH OF 200 PSI, AND A MINIMUM TRAPEZOIDAL TEAR STRENGTH OF 50 LBS. FILTER BAGS SHALL BE CAPABLE OF TRAPPING ALL PARTICLES NOT PASSING A NO. 40 SIEVE.
- INLET FILTER BAGS SHALL BE INSPECTED ON A WEEKLY BASIS AND AFTER EACH RUNOFF EVENT. BAGS SHALL BE EMPTIED AND RINSED OR REPLACED WHEN HALF FULL OR WHEN FLOW CAPACITY HAS BEEN REDUCED SO AS TO CAUSE FLOODING OR BYPASSING OF THE INLET. DAMAGED OR CLOGGED BAGS SHALL BE REPLACED. A SUPPLY SHALL BE MAINTAINED ON SITE FOR REPLACEMENT OF BAGS. ALL NEEDED REPAIRS SHALL BE INITIATED IMMEDIATELY AFTER THE INSPECTION. DISPOSE ACCUMULATED SEDIMENT AS WELL AS ALL USED BAGS ACCORDING TO THE PLAN NOTES.
- DO NOT USE ON MAJOR PAVED ROADWAYS WHERE PONDING MAY CAUSE TRAFFIC HAZARDS.

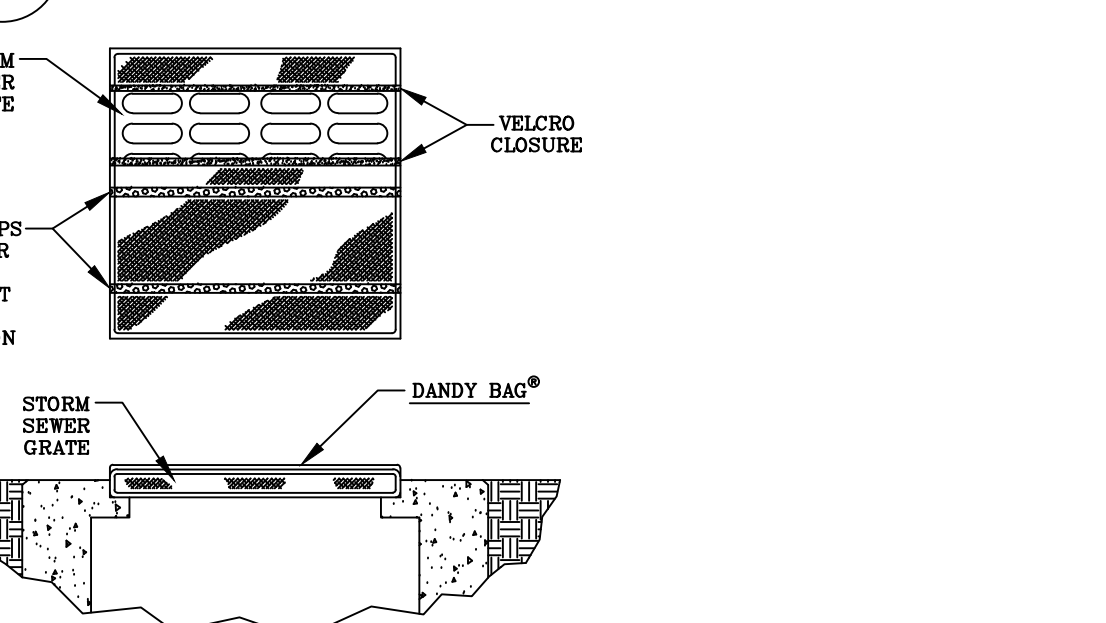
INLET FILTER BAG (FOR TYPE M INLETS)



NOTES:

- SOCK FABRIC SHALL MEET STANDARDS OF TABLE 4.1 OF THE PA DEP EROSION CONTROL MANUAL. COMPOST SHALL MEET THE STANDARDS OF TABLE 4.2 OF THE PA DEP EROSION CONTROL MANUAL.
- COMPOST FILTER SOCK SHALL BE PLACED AT EXISTING LEVEL GRADE. BOTH ENDS OF THE BARRIER SHALL BE EXTENDED AT LEAST 8 FEET UP SLOPE AT 45 DEGREES TO THE MAIN BARRIER ALIGNMENT. MAXIMUM SLOPE LENGTH ABOVE ANY BARRIER SHALL NOT EXCEED THAT SPECIFIED FOR THE SIZE OF THE SOCK AND THE SLOPE OF ITS TRIBUTARY AREA.
- TRAFFIC SHALL NOT BE PERMITTED TO CROSS COMPOST FILTER SOCKS. ACCUMULATED SEDIMENT SHALL BE REMOVED WHEN IT REACHES 1/2 THE ABOVE GROUND HEIGHT OF THE BARRIER AND DISPOSED IN THE MANNER DESCRIBED ELSEWHERE IN THE PLAN.
- COMPOST FILTER SOCKS SHALL BE INSPECTED WEEKLY AND AFTER EACH RUNOFF EVENT. DAMAGED SOCKS SHALL BE REPAIRED ACCORDING TO SPECIFICATIONS OR REPLACED WITHIN 24 HOURS OF MANUFACTURER INSPECTION.
- BIODEGRADABLE COMPOST FILTER SOCKS SHALL BE REPLACED AFTER 6 MONTHS. PHOTODEGRADABLE SOCKS AFTER 1 YEAR. POLYPROPYLENE SOCKS SHALL BE REPLACED ACCORDING TO MANUFACTURER'S RECOMMENDATIONS.
- UPON STABILIZATION OF THE AREA TRIBUTARY TO THE SOCK, STAKES SHALL BE REMOVED. THE SOCK MAY BE LEFT IN PLACE AND VEGETATED OR REMOVED. IN THE LATTER CASE, THE MESH SHALL BE CUT OPEN AND THE MULCH SPREAD AS A SOIL SUPPLEMENT.

3 COMPOST FILTER SOCK
 NTS



PROPERTY	TEST METHOD	UNITS	TEST RESULTS
GRAB TENSILE STRENGTH	ASTM D 4632	LBS	450 X 300
ELONGATION	ASTM D 4632	%	40% X 25%
PUNCTURE STRENGTH	ASTM D 4833	LBS	130
MULLEN BURST STRENGTH	ASTM D 3786	PSI	600
TRAPEZOID TEAR STRENGTH	ASTM D 4533	LBS	165 X 150
% OPEN AREA (POA)	COE. 22125-86	%	28.00%
APPARENT OPENING SIZE	ASTM D 4751	US STD SIEVE	30.00%
PERMITTIVITY	ASTM D 4491	SEC*	3.50%
PERMEABILITY	ASTM D 4491	CMSEC	0.25%
WATER FLOW RATE	ASTM D 4491	GAL/MIN/FT*	250.00%
ULTRAVIOLET RESISTANCE	ASTM D 4355	%	70.00%
COLOR			ORANGE

INSTALLATION NOTES:

- PLACE THE EMPTY DANDY BAG OVER THE GRATE AS THE GRATE STANDS ON END.
- FOR OIL AND SEDIMENT MODEL, TO INSTALL OR REPLACE ABSORBENT, PLACE ABSORBENT PILLION IN POUCH, ON THE BOTTOM (BELOW-GRADE SIDE) OF THE UNIT.
- TUCK THE ENCLOSURE FLAP INSIDE TO COMPLETELY ENCLOSE THE GRATE. HOLDING THE LIFTING DEVICES, INSERT THE GRATE INTO THE INLET BEING CAREFUL NOT TO DAMAGE THE DANDY BAG UNIT.

MAINTENANCE NOTES:

- DANDY BAGS SHALL BE INSPECTED WEEKLY AND AFTER EACH RUNOFF EVENT.
- THE CONTRACTOR SHALL REMOVE ALL ACCUMULATED SEDIMENT AND DEBRIS FROM SURFACE AND VICINITY OF UNIT AFTER EACH RAIN EVENT OR AS DIRECTED BY ENGINEER/INSPECTOR. DISPOSE OF UNIT NO LONGER IN USE AT AN APPROPRIATE RECYCLING OR SOLID WASTE FACILITY.
- FOR OIL AND SEDIMENT MODEL, REMOVE AND REPLACE ABSORBENT WHEN NEAR SATURATION.
- DAMAGED DANDY BAGS SHALL BE REPAIRED OR REPLACED WITHIN 24 HOURS OF INSPECTION. A SUPPLY OF DANDY BAGS SHALL BE KEPT ON SITE FOR THIS PURPOSE.

DANDY BAG (FOR 2 X 2 INLETS)

TABLE 4.1 COMPOST SOCK FABRIC MINIMUM SPECIFICATIONS

MATERIAL TYPE	3 MIL HDPE	5 MIL HDPE	5 MIL HDPE	MULTI FILAMENT POLYPROPYLENE (MFPP)	HEAVY DUTY MULTI-FILAMENT POLYPROPYLENE (HDMFPP)
MATERIAL CHARACTERISTICS	12" 18"	12" 18" 24" 32"	12" 18" 24" 32"	12" 18" 24" 32"	12" 18" 24" 32"
MESH OPENING	3/8"	3/8"	3/8"	3/8"	1/8"
TENSILE STRENGTH		26 PSI	26 PSI	44 PSI	202 PSI
ULTRAVIOLET STABILITY % ORIGINAL STRENGTH (ASTM G-155)	23% AT 1000 HR	23% AT 1000 HR		100% AT 1000 HR	100% AT 1000 HR
MINIMUM FUNCTIONAL LONGEVITY	6 MONTHS	9 MONTHS	6 MONTHS	1 YEAR	2 YEARS

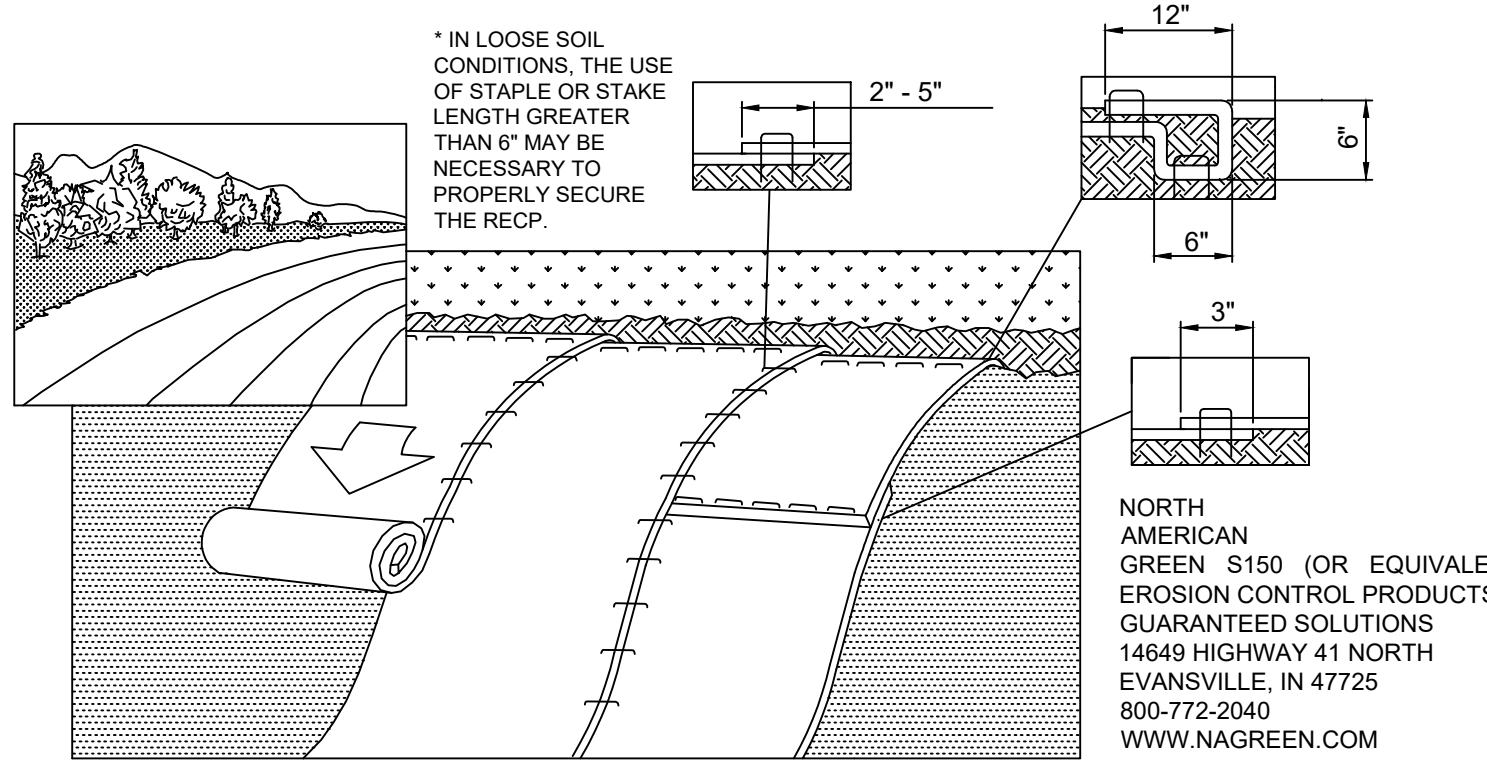
TWO-PLY SYSTEMS

INNER CONTAINMENT NETTING	HDPE BIAXIAL NET CONTINUOUSLY WOUND FUSION-WELDED JUNCTURES 3/4" X 3/4" MAX. APERTURE SIZE
OUTER FILTRATION MESH	COMPOSITE POLYPROPYLENE FABRIC (WOVEN LAYER AND NON-WOVEN FLEECE MECHANICALLY FUSED VIA NEEDLE PUNCH) 3/16" MAX. APERTURE SIZE

SOCK FABRICS COMPOSED OF BURLAP MAY BE USED ON PROJECTS LASTING 6 MONTHS OR LESS

TABLE 4.2 COMPOST STANDARDS

ORGANIC MATTER CONTENT	25% - 100% (DRY WEIGHT)
ORGANIC PORTION	FIBROUS AND ELONGATED
pH	6.0 - 8.0
MOISTURE CONTENT	30% - 60%
PARTICLE SIZE	100% PASS A 1" SCREEN 10-50% PASS A 3/8" SCREEN
SOLUBLE SALT CONCENTRATION	5.0 dS/m (mmhos/cm) MAXIMUM



NOTES:

- PREPARE SOIL BEFORE INSTALLING ROLLED EROSION CONTROL PRODUCT (RECP), INCLUDING AND NECESSARY APPLICATION OF LIME, FERTILIZER, AND SEED. NOTE: WHEN USING CELL-O-SEED, DO NOT SEED PREPARED AREA. CELL-O-SEED MUST BE INSTALLED WITH PAPER SIDE DOWN.
- BEGIN AT THE TOP OF THE SLOPE BY ANCHORING THE RECP IN A 6" DEEP X 6" WIDE TRENCH WITH APPROXIMATELY 12" OF RECP EXTENDED BEYOND THE UP-SLOPE PORTION OF THE TRENCH. ANCHOR THE RECP WITH A ROW OF STAPLES/STAKES APPROXIMATELY 12" APART IN THE BOTTOM OF THE TRENCH. BACKFILL AND COMPACT THE TRENCH AFTER STAPLING. APPLY SEED TO COMPACTED SOIL AND FOLD REMAINING 12" (30 CM) PORTION OF RECP BACK OVER SEED AND COMPACTED SOIL. SECURE RECP OVER COMPACTED SOIL WITH A ROW OF STAPLES/STAKES SPACED APPROXIMATELY 12" APART THE WIDTH OF THE RECP. ROLL THE RECP (A.) DOWN OR (B.) HORIZONTALLY ACROSS THE SLOPE. RECP WILL UNROLL WITH APPROPRIATE SIDE.
- AGAINST THE SOIL SURFACE. ALL RECP MUST BE SECURELY FASTENED TO SOIL SURFACE BY PLACING STAPLES/STAKES IN APPROPRIATE LOCATIONS AS SHOWN IN THE STAPLE PATTERN GUIDE. WHEN USING THE DOT SYSTEM, STAPLES/STAKES SHOULD BE PLACED THROUGH EACH OF THE COLORED DOTS CORRESPONDING TO THE APPROPRIATE STAPLE PATTERN.
- THE EDGES OF PARALLEL RECP MUST BE STAPLED WITH APPROXIMATELY 2" - 5" OVERLAP DEPENDING ON RECP TYPE.
- CONSECUTIVE RECP SPLICED DOWN THE SLOPE MUST BE PLACED END OVER END (SHINGLE STYLE) WITH AN APPROXIMATE 3" OVERLAP. STAPLE THROUGH OVERLAPPED AREA, APPROXIMATELY 12" APART ACROSS ENTIRE RECP WIDTH.
- INSTALL RECP ON ALL SLOPES 3:1 OR GREATER.

6 EROSION CONTROL BLANKET
 NTS